

723

OZAUKEE COUNTY
U.S. PUBLIC LAND SURVEY MONUMENT RECORD

U.S. P.L.S. CORNER $\frac{1}{1} | \frac{1}{1}$ T. 11 N., R. 21 E. OZAUKEE COUNTY, WI

GEODETIC SURVEY BY: KAPUR & ASSOCIATES, INC. YEAR: 1997

STATE PLANE COORDINATES OF:
NORTH 534642.02
EAST 2549499.04

ELEVATION OF STATION: 784.43

HORIZONTAL DATUM: WISCONSIN STATE PLANE COORDINATE, SOUTH ZONE
NORTH AMERICAN DATUM: X 1927 1983
VERTICAL DATUM: NATIONAL GEODETIC VERTICAL DATUM OF 1929

CONTROL ACCURACY: THETA ANGLE: 1-25-18.87

HORIZONTAL: 3RD ORDER, CLASS 1: VERTICAL: 3RD ORDER

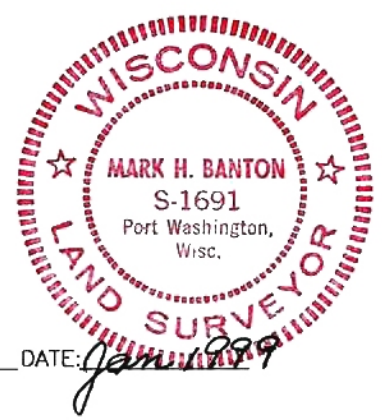
DESCRIPTION OF MONUMENT AND HOW LOCATION WAS DETERMINED:

FOUND LIMESTONE MONUMENT.
REPLACED WITH CONCRETE MONUMENT WITH BRASS CAP.

CERTIFICATION

I CERTIFY THAT THE CORNER LOCATION ON THIS RECORD WAS DETERMINED BY ME OR UNDER MY DIRECTION AND CONTROL AND THAT THIS U.S. PUBLIC LAND SURVEY MONUMENT RECORD IS CORRECT AND COMPLETE TO THE BEST OF MY KNOWLEDGE AND BELIEF.

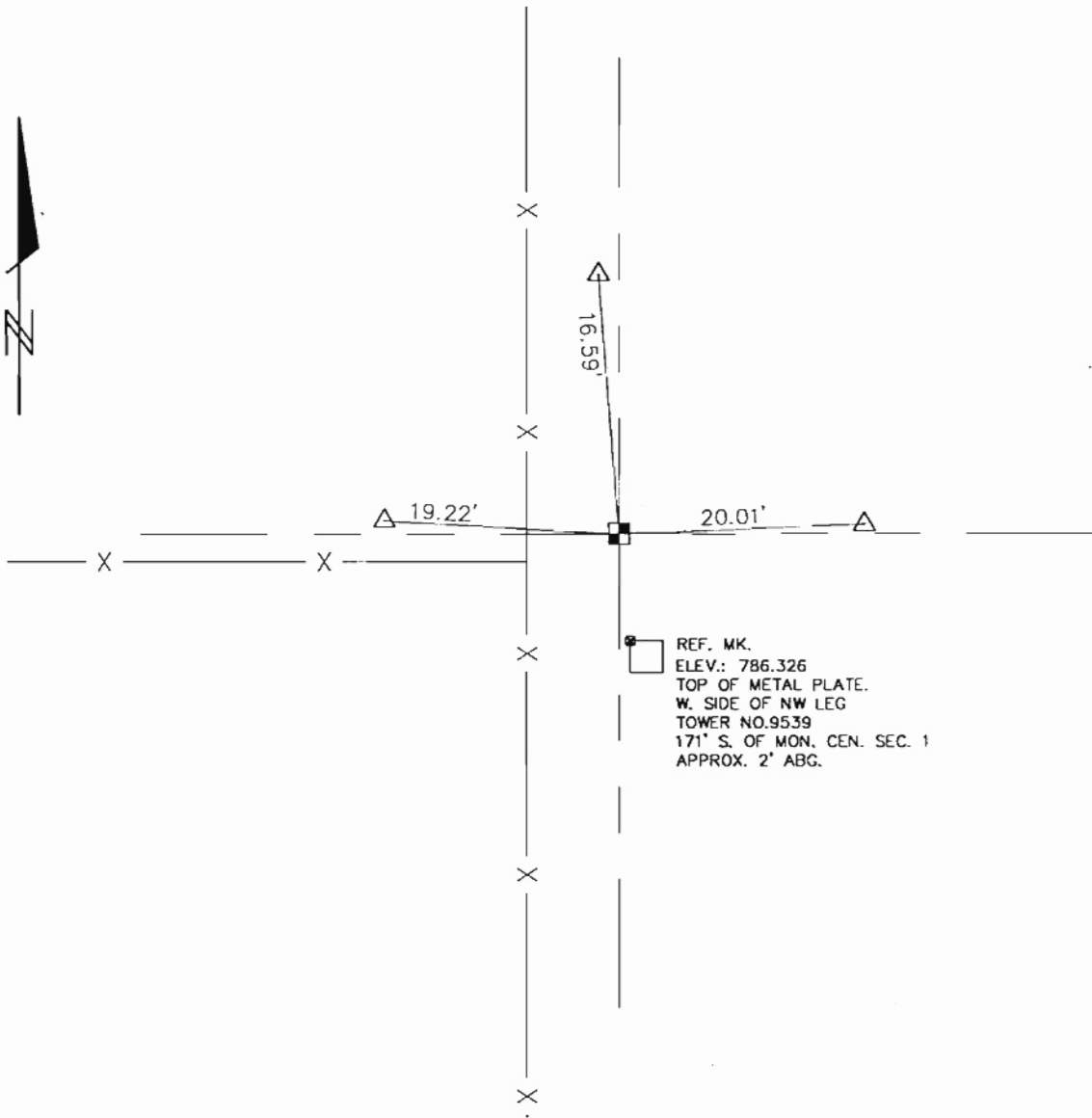
SIGNATURE Mark H. Banton S-1691
OZAUKEE COUNTY SURVEYOR



DATE: Jan 1999

OZAUKEE COUNTY
U.S. PUBLIC LAND SURVEY MONUMENT RECORD

PLAN VIEW OF CORNER WITH TIES TO A MINIMUM OF 4 WITNESS MONUMENTS



MAINTENANCE RECORD

MONUMENT LEGEND

DATE	INITIAL	REMARKS
11/14/97	B.E.S.	

- ⊗ = BERNTSEN ALUMINUM MONUMENT
- = CONCRETE WITH BRASS CAP
- ⊕ = CONCRETE WITH CROSS
- △ = 3/4" REBAR