

**"U.S. PUBLIC LAND SURVEY MONUMENT RECORD"
OZAUKEE COUNTY, WISCONSIN**

TYPE OF MONUMENT: 3/4"x12' solid aluminum road with aluminum cap

STATE PLANE COORDINATES: N: 507218.19

E: 2524001.95

ELEVATION: 866.83 M.S.L. DATUM: 1929

THETA ANGLE: _____

FIELD BOOK: 3 PAGE: 27

FIELDWORK BY: TOM GENSKE 1996, KAPUR AND ASSOCIATES 1998

RECORD DRAWN BY: MARK BANTON

CONTROL ACCURACY:

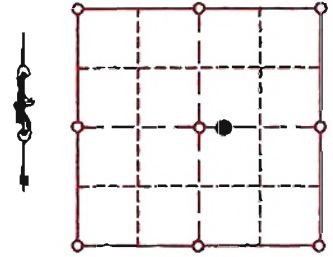
HORIZONTAL: 3RD ORDER, CLASS 1 VERTICAL: 3RD ORDER

CORNER INDEX No. 508-4

SECTION 31

TOWNSHIP 11

RANGE 21



LOCATION

SEAL:

BASIS OF MONUMENT LOCATION

1996 - TOM GENSKE, OZAUKEE COUNTY SURVEYOR SET 3/4"x12' ALUMINUM ROD WITH CAP WEST OF EAST 1/4 CORNER

1998- KAPUR AND ASSOCIATES ESTABLISHED CO-ORDINATES AS PART OF OZAUKEE COUNTY REMONUMENTATION PROGRAM

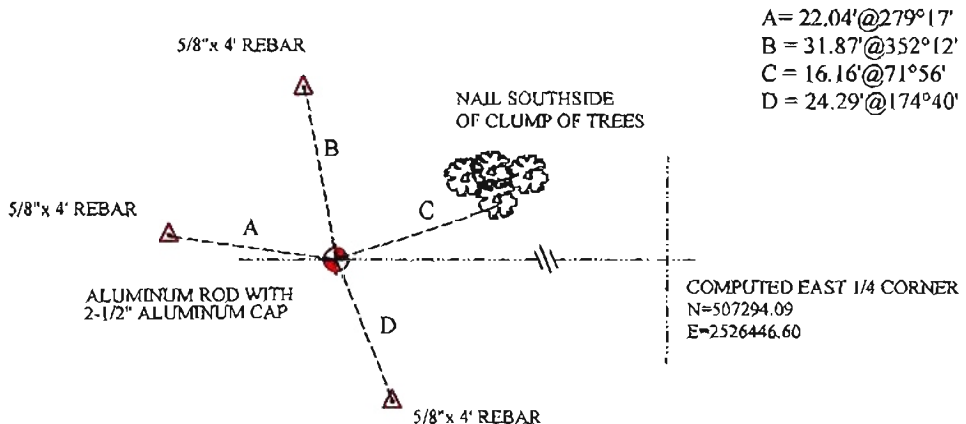


DATA SHOWN HEREON IS CERTIFIED AS CORRECT:

Mark Banton
Ozaukee County Surveyor

DATE: 11/21/08

TIE SKETCH



A = 22.04' @ 279°17'
B = 31.87' @ 352°12'
C = 16.16' @ 71°56'
D = 24.29' @ 174°40'

MAINTENANCE RECORD

- MONUMENT LEGEND**
- = BERNTSEN MONUMENT (SEE TYPE OF MON. ABOVE)
 - = CONCRETE MONUMENT w/ BRASS CAP
 - = CONCRETE MONUMENT w/ CROSS
 - = 5/8" REBAR WITH ALUMINUM CAP

DATE	BY WHOM	REMARKS
11/20/08	M. BANTON	Redraw from tie sheet and re-number corner