

**"U.S. PUBLIC LAND SURVEY MONUMENT RECORD"
OZAUKEE COUNTY, WISCONSIN**

TYPE OF MONUMENT: 3/4"x15' solid aluminum rod with aluminum cap

STATE PLANE COORDINATES: N: 505550.73

E: 2526521.39

ELEVATION: 866.43 M.S.L. DATUM: 1929

THETA ANGLE: _____

FIELD BOOK: 3 PAGE: 25

FIELDWORK BY: TOM GENSKE 1996, KAPUR AND ASSOCIATES 1998

RECORD DRAWN BY: MARK BANTON

CONTROL ACCURACY:

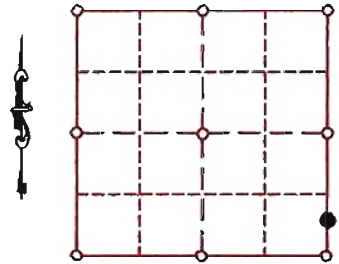
HORIZONTAL: 3RD ORDER, CLASS 1 VERTICAL: 3RD ORDER

CORNER INDEX No. 508-3

SECTION 31

TOWNSHIP 11

RANGE 21



LOCATION

BASIS OF MONUMENT LOCATION

1996 - TOM GENSKE, OZAUKEE COUNTY SURVEYOR SET 3/4"x15' ALUMINUM ROD WITH CAP 1745.06' SOUTH OF EAST 1/4 CORNER

1998- KAPUR AND ASSOCIATES ESTABLISHED CO-ORDINATES AS PART OF OZAUKEE COUNTY REMONUMENTATION PROGRAM

SEAL:

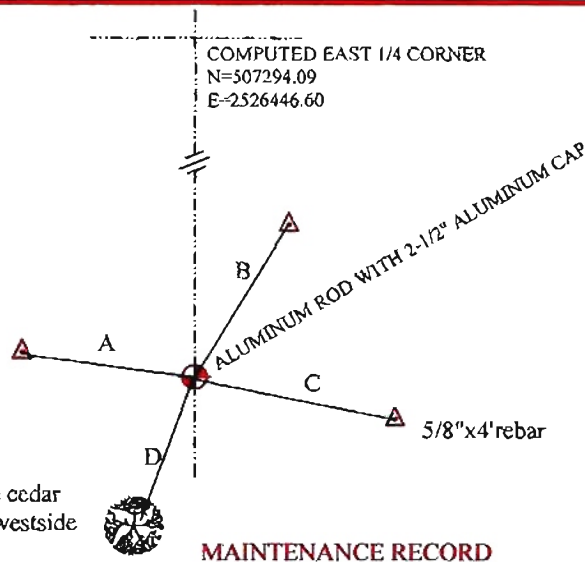


DATA SHOWN HEREON IS CERTIFIED AS CORRECT:

Mark Banton
Ozaukee County Surveyor

DATE: 12/5/08

TIE SKETCH



A = 20.76' @ 287°31'

B = 23.55' @ 23°08'

C = 31.82' @ 103°13'

D = 24.87' @ 191°19'

6" white cedar
#6 nail westside
at grd.

MAINTENANCE RECORD

- MONUMENT LEGEND**
- = BERNTSEN MONUMENT (SEE TYPE OF MON. ABOVE)
 - = CONCRETE MONUMENT w/ BRASS CAP
 - = CONCRETE MONUMENT w/ CROSS
 - = 5/8" REBAR WITH ALUMINUM CAP

DATE	BY WHOM	REMARKS
11/20/08	M. BANTON	Redraw from tie sheet and re-number corner