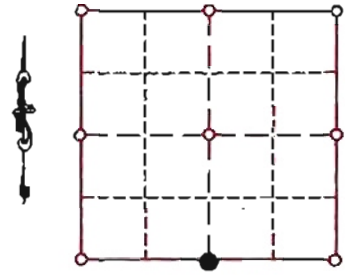


"U.S. PUBLIC LAND SURVEY MONUMENT RECORD"
OZAUKEE COUNTY, WISCONSIN

TYPE OF MONUMENT: Bernsten plastic monument w/ brass cap
 STATE PLANE COORDINATES: N: 505229.76
 E: 2545027.35
 ELEVATION: 781.57 M.S.L. DATUM: 1929
 THETA ANGLE: _____
 FIELD BOOK: 2 PAGE: 66
 FIELDWORK BY: KAPUR AND ASSOCIATES/TOM GENSKE 1995
 RECORD DRAWN BY: MARK BANTON
 CONTROL ACCURACY:
 HORIZONTAL: 3RD ORDER, CLASS 1 VERTICAL: 3RD ORDER

CORNER INDEX No. 482
 SECTION 35
 TOWNSHIP 11
 RANGE 21



LOCATION

BASIS OF MONUMENT LOCATION

1986 - I found a concrete monument with brass cap as set to mark this corner by Wallace Nienow, S-175, in august 1969; replacing a cut limestone monument 30" below the road surface then marking this corner.

1995 - Tom Genske - Ozaukee County Surveyor; using existing tie, found concrete monument with brass cap, 15" below pavement surface, removed and replaced said monument with a Bernsten plastic monument w/ brass cap and referenced as shown

SEAL:

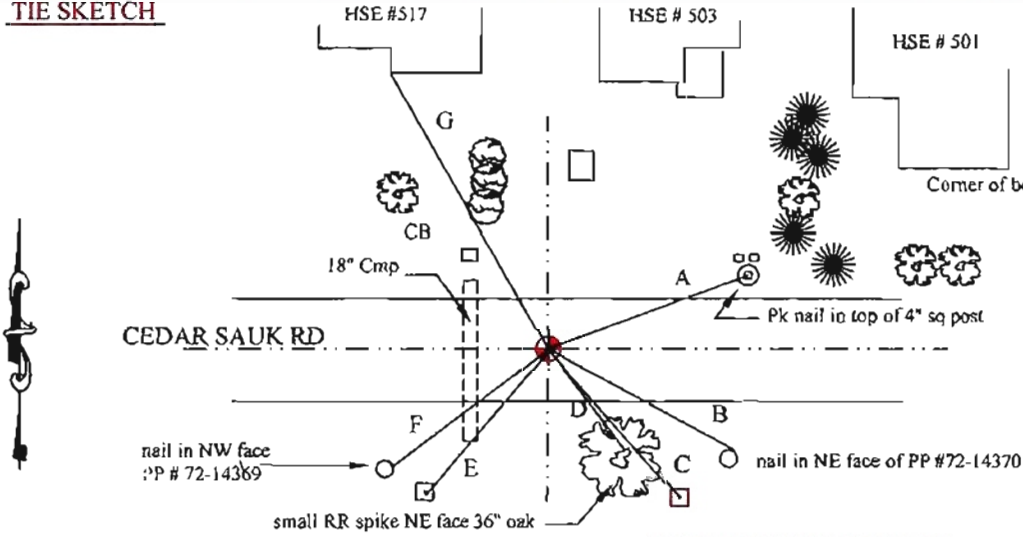


DATA SHOWN HEREON IS CERTIFIED AS CORRECT:

Mark Banton
 Ozaukee County Surveyor

DATE: 11/10/08

TIE SKETCH



- A = 73.57' @ 65°
- B = 83.37' @ 111°
- C = 68.73' @ 115°
- D = 30.57' @ 147°
- E = 69.68' @ 242°
- F = 76.67' @ 246°
- G = 118.76' @ 333°

MAINTENANCE RECORD

- MONUMENT LEGEND**
- = BERNTSEN MONUMENT (SEE TYPE OF MON. ABOVE)
 - = CONCRETE MONUMENT w/ BRASS CAP
 - = CONCRETE MONUMENT w/ CROSS
 - = 5/8" REBAR WITH ALUMINUM CAP

DATE	BY WHOM	REMARKS
11/10/08	M. BANTON	Redraw from tie sheet and re-number corner