

RECORD OF U.S. PUBLIC LAND SURVEY CONTROL STATION

QUARTER SECTION CORNER 31/31 TOWNSHIP 11 N. RANGE 22 E, OZAUKEE COUNTY, WISCONSIN
5

GEOGRAPHIC SURVEY BY: CHICAGO AERIAL SURVEY

STATE PLANE COORDINATES OF: 701.62
NORTH 505,702.215
EAST 2,555,644.730

ELEVATION OF STATION: 769.450 605.49 THETA ANGLE: +1° 26' 09"

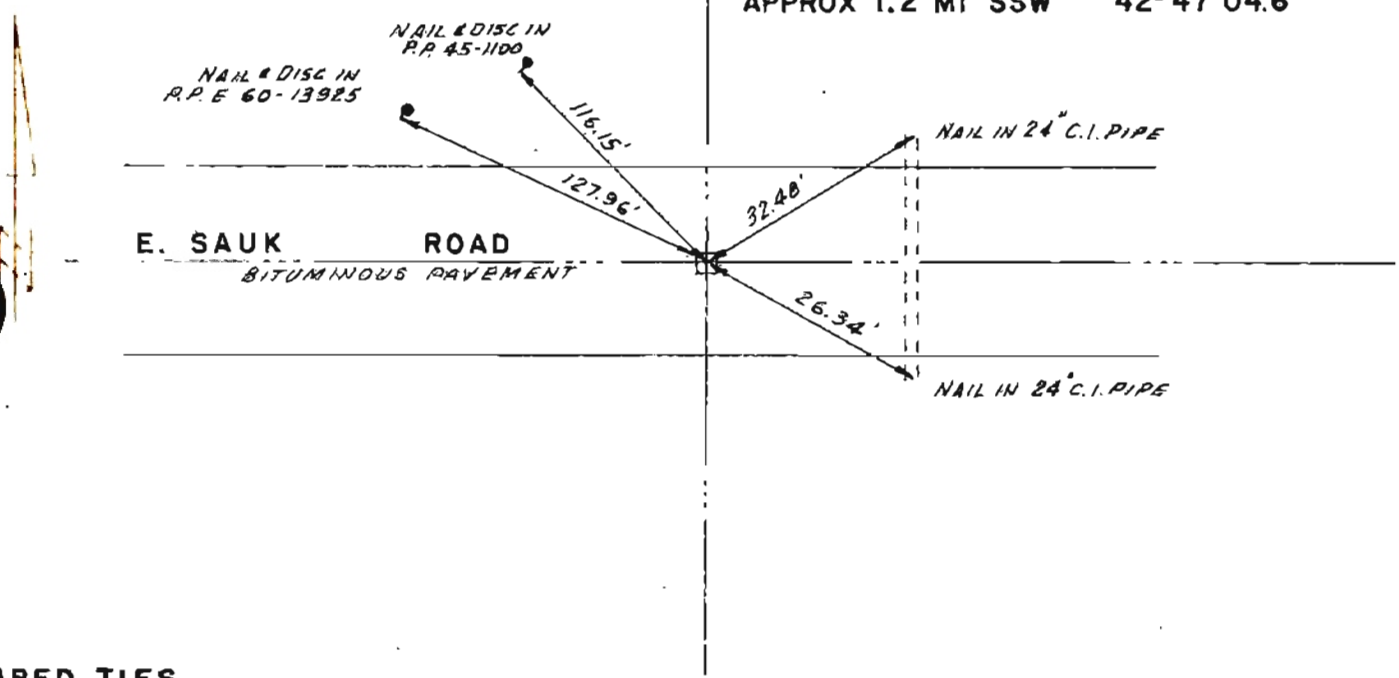
HORIZONTAL DATUM: WISCONSIN STATE PLANE COORDINATE SYSTEM, SOUTH ZONE

VERTICAL DATUM: MEAN SEA LEVEL, 1929 ADJUSTMENT

HORIZONTAL & VERTICAL CONTROL ACCURACY: SECOND ORDER

LOCATION SKETCH

AZ. MARK
LIGHTNING ROD AT CENTER & TOP OF SILO
APPROX 1.2 Mi SSW 42° 47' 04.6"



PLUMBED TIES

SUPREOR'S AFFIDAVIT:

STATE OF WISCONSIN)
OZAUKEE COUNTY) SS

I HEREBY CERTIFY THAT AN OLD IRON PIPE WAS FOUND UNDER PAVEMENT.
REPLACED WITH 6" SQUARE NEW CAST CONG. MON. WITH BRASS PLUG.

DATE OF SURVEY: APRIL 18, 1967 Edward P. Ferguson S - 139
REGISTERED LAND SURVEYOR