

OZAUKEE COUNTY

U.S. PUBLIC LAND SURVEY MONUMENT RECORD

U.S. P.L.S. CORNER $\frac{34}{3} \frac{34}{3}$ T. ¹²11 N., R. 22 E. OZAUKEE COUNTY, WI

GEODETIC SURVEY BY: KAPUR & ASSOCIATES, INC. YEAR: 1997

STATE PLANE COORDINATES OF:
NORTH 537952.98
EAST 2570655.60

ELEVATION OF STATION: 737.19 737.06

HORIZONTAL DATUM: WISCONSIN STATE PLANE COORDINATE, SOUTH ZONE
NORTH AMERICAN DATUM: X 1927 1983
VERTICAL DATUM: NATIONAL GEODETIC VERTICAL DATUM OF 1929

CONTROL ACCURACY: THETA ANGLE: 1-28-36.67

HORIZONTAL: 3RD ORDER, CLASS 1: VERTICAL: 3RD ORDER

DESCRIPTION OF MONUMENT AND HOW LOCATION WAS DETERMINED:

FOUND PK NAIL SET BY ROD FORMELLA. SET PLASTIC BERNTSEN MONUMENT WITH BRASS CAP. AT CLOSING CORNER BY AVERAGE FALLING AT NE & NW CORNERS.

CERTIFICATION

I CERTIFY THAT THE CORNER LOCATION ON THIS RECORD WAS DETERMINED BY ME OR UNDER MY DIRECTION AND CONTROL AND THAT THIS U.S. PUBLIC LAND SURVEY MONUMENT RECORD IS CORRECT AND COMPLETE TO THE BEST OF MY KNOWLEDGE AND BELIEF.

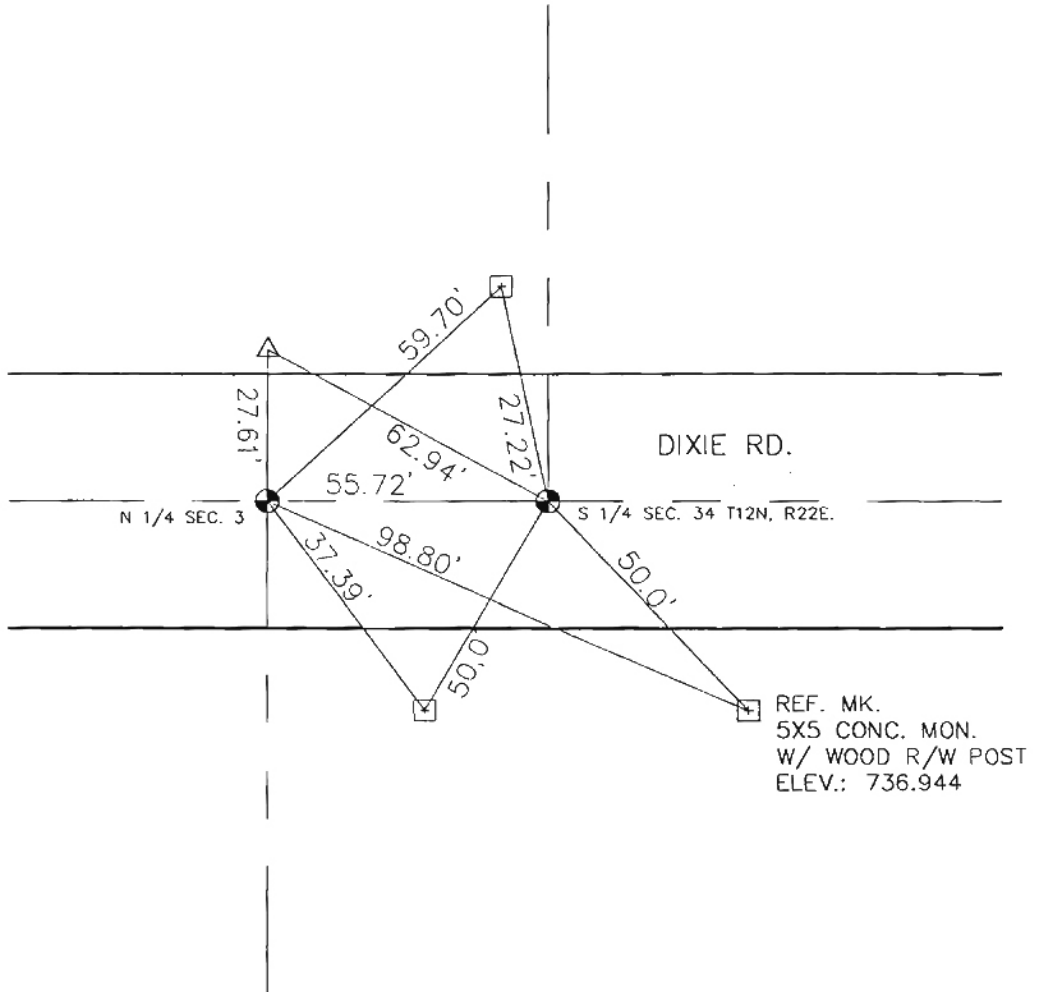
SIGNATURE Thomas J. Genske S-1317
OZAUKEE COUNTY SURVEYOR



DATE: 6/16/98

OZAUKEE COUNTY
U.S. PUBLIC LAND SURVEY MONUMENT RECORD

PLAN VIEW OF CORNER WITH TIES TO A MINIMUM OF 4 WITNESS MONUMENTS



MAINTENANCE RECORD

MONUMENT LEGEND

DATE	INITIAL	REMARKS
1/25/97	B.E.S.	

- ⊙ = BERNTSEN PLASTIC MONUMENT
- ⊠ = 5x5 FOUND CONC. MONUMENT W/CAP
- ⊞ = 5x5 CONCRETE WITH CROSS
- △ = 3/4" REBAR SET