

**"U.S. PUBLIC LAND SURVEY MONUMENT RECORD"
OZAUKEE COUNTY, WISCONSIN**

TYPE OF MONUMENT: Berntsen aluminum monument w/ 2" risor

STATE PLANE COORDINATES: N: 505628.92

E: 2554042.74

ELEVATION: 774.88 M.S.L. DATUM: 1929

FIELD BOOK: 2 PAGE: 33

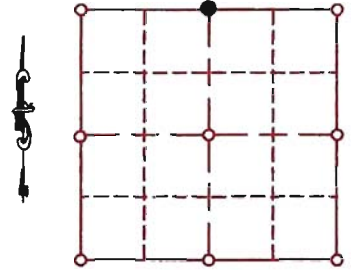
FIELDWORK BY: Tom Genske & KAPUR & ASSOC 1994

RECORD DRAWN BY: MARK BANTON

CONTROL ACCURACY:

HORIZONTAL: 3RD ORDER CLASS 1 VERTICAL: 3RD ORDER

CORNER INDEX No. 475
SECTION 5
TOWNSHIP 10
RANGE 22



LOCATION

BASIS OF MONUMENT LOCATION

SEAL:

1994- Tom Genske (County Surveyor) replaced a SEWRPAC concrete monument with damaged top, used center and set new monument

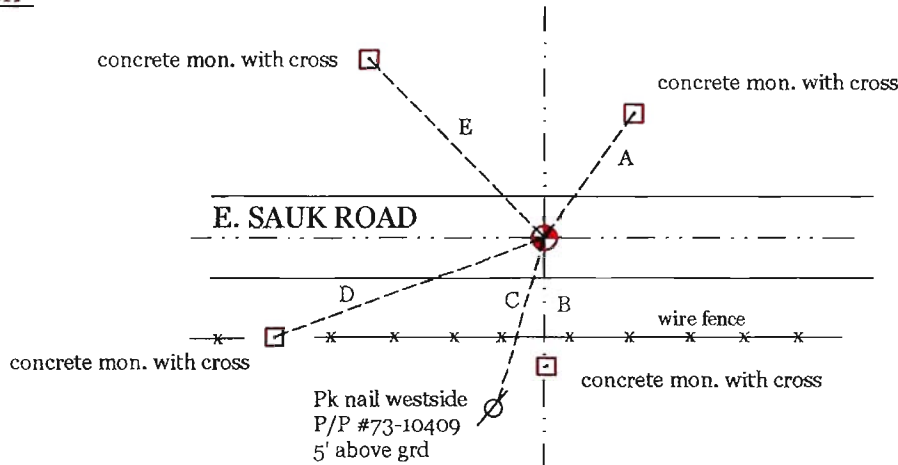


DATA SHOWN HEREON
IS CERTIFIED AS CORRECT:

Mark Banton
Ozaukee County Surveyor

DATE: 1/25/08

TIE SKETCH



A = 36.79'@39°
B = 46.48'@180°
C = 57.13'@183°
D = 76.34'@237°
E = 66.58'@295°

MAINTENANCE RECORD

MONUMENT LEGEND

- = BERNTSEN MONUMENT (SEE TYPE OF MON. ABOVE)
- = CONCRETE MONUMENT w/ BRASS CAP
- = CONCRETE MONUMENT w/ CROSS
- = 5/8" REBAR WITH ALUMINUM CAP

DATE	BY WHOM	REMARKS
1/25/08	Mark Banton	drawn from T. Genske fieldnotes