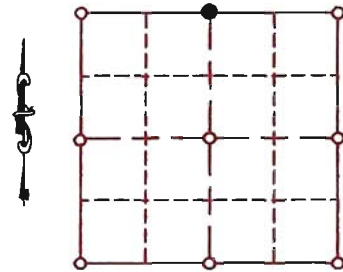


**"U.S. PUBLIC LAND SURVEY MONUMENT RECORD"  
OZAUKEE COUNTY, WISCONSIN**

TYPE OF MONUMENT: BERNSTEN MONUMENT WITH BRASS CAP  
 STATE PLANE COORDINATES: N: 478695.26  
 E: 2549820.71  
 ELEVATION: 719.04 M.S.L. DATUM: 1929

CORNER INDEX No. 278  
 SECTION 31  
 TOWNSHIP 10  
 RANGE 22

FIELD BOOK: \_\_\_\_\_ PAGE: \_\_\_\_\_  
 FIELDWORK BY: Tom Genske & kapur and Associates  
 RECORD DRAWN BY: MARK BANTON from Tom Genske fieldnotes  
 CONTROL ACCURACY:  
 HORIZONTAL: 3RD ORDER, CLASS 1 VERTICAL: 3RD ORDER



LOCATION

BASIS OF MONUMENT LOCATION

1969-Kenneth Wolf (Land Surveyor) found SEWRPC Monument with brass cap. Ties on 1969 dossier sheet all gone. New ties set 1993 - Tom Genske (County Surveyor) set Bernsten monument with brass cap at location of concrete monument with broken cap.

SEAL:

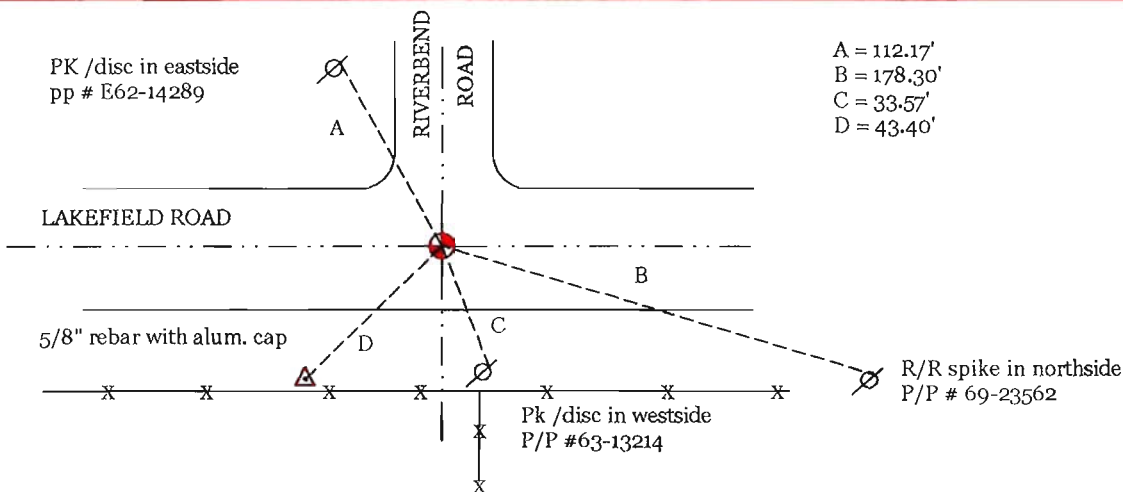


DATA SHOWN HEREON  
IS CERTIFIED AS CORRECT:

*Mark Banton*  
Ozaukee County Surveyor

DATE: 1/22/08

TIE SKETCH



MAINTENANCE RECORD

- MONUMENT LEGEND**
- = BERNTSEN MONUMENT ( SEE TYPE OF MON. ABOVE)
  - = CONCRETE MONUMENT w/ BRASS CAP
  - = CONCRETE MONUMENT w/ CROSS
  - = 5/8" REBAR WITH ALUMINUM CAP

DATE	BY WHOM	REMARKS
22 Jan 2008	M. Banton	re-draw and re-number corner