

**"U.S. PUBLIC LAND SURVEY MONUMENT RECORD"
OZAUKEE COUNTY, WISCONSIN**

CORNER INDEX No. 273-4

TYPE OF MONUMENT: Concrete monument w/brass cap

SECTION 33

STATE PLANE COORDINATES: N: 476326.75

TOWNSHIP 10

E: 2558710.01

RANGE 22

ELEVATION: 714.13 M.S.L. DATUM: 1929

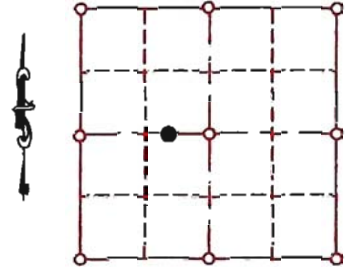
FIELD BOOK: 3 PAGE: 11

FIELDWORK BY: Tom Genske & kapur and Associates

RECORD DRAWN BY: MARK BANTON from Tom Genske fieldnotes

CONTROL ACCURACY:

HORIZONTAL: 3RD ORDER, CLASS 1 VERTICAL: 3RD ORDER



LOCATION

BASIS OF MONUMENT LOCATION

SEAL:

1995- Tom Genske (county surveyor)-replaced rebar with concrete monument with brass cap

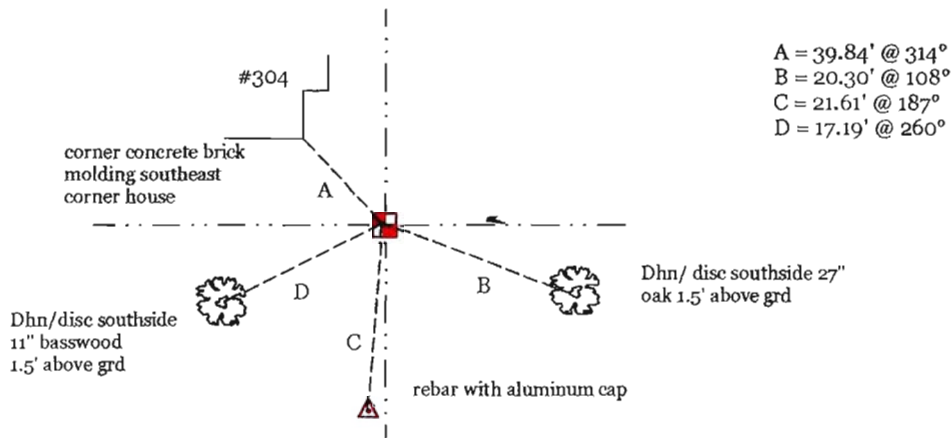


DATA SHOWN HEREON IS CERTIFIED AS CORRECT:

Mark Banton
Ozaukee County Surveyor

DATE: 14 Jan 08

TIE SKETCH



MAINTENANCE RECORD

MONUMENT LEGEND

- = BERNTSEN MONUMENT (SEE TYPE OF MON. ABOVE)
- = CONCRETE MONUMENT w/ BRASS CAP
- = CONCRETE MONUMENT w/ CROSS
- = 5/8" REBAR WITH ALUMINUM CAP

DATE	BY WHOM	REMARKS
14 Jan 2008	M. Banton	re-draw and re-number corner