



## PLANNING & PARKS DEPARTMENT

Andrew T. Struck, Director

[www.co.ozaukee.wi.us/540/Planning-Parks](http://www.co.ozaukee.wi.us/540/Planning-Parks)

The Ozaukee County (County) Planning and Parks Department (Department) (Owner) is seeking proposals from qualified companies to provide an ADA compliant boardwalk and observation platform at Lion's Den Gorge Nature Preserve within the Ozaukee County Park System and at an adjacent open water area in the Ulao Waterfowl Production Area (WPA) owned and managed by the US Fish and Wildlife Service. The Department is requesting proposals for provision and delivery of materials only (County to complete installation with guidance from the contractor) AND proposals for materials and installation by the contractor. Lion's Den Gorge Nature Preserve is located at 511 High Bluff Drive, Grafton, WI 53024.

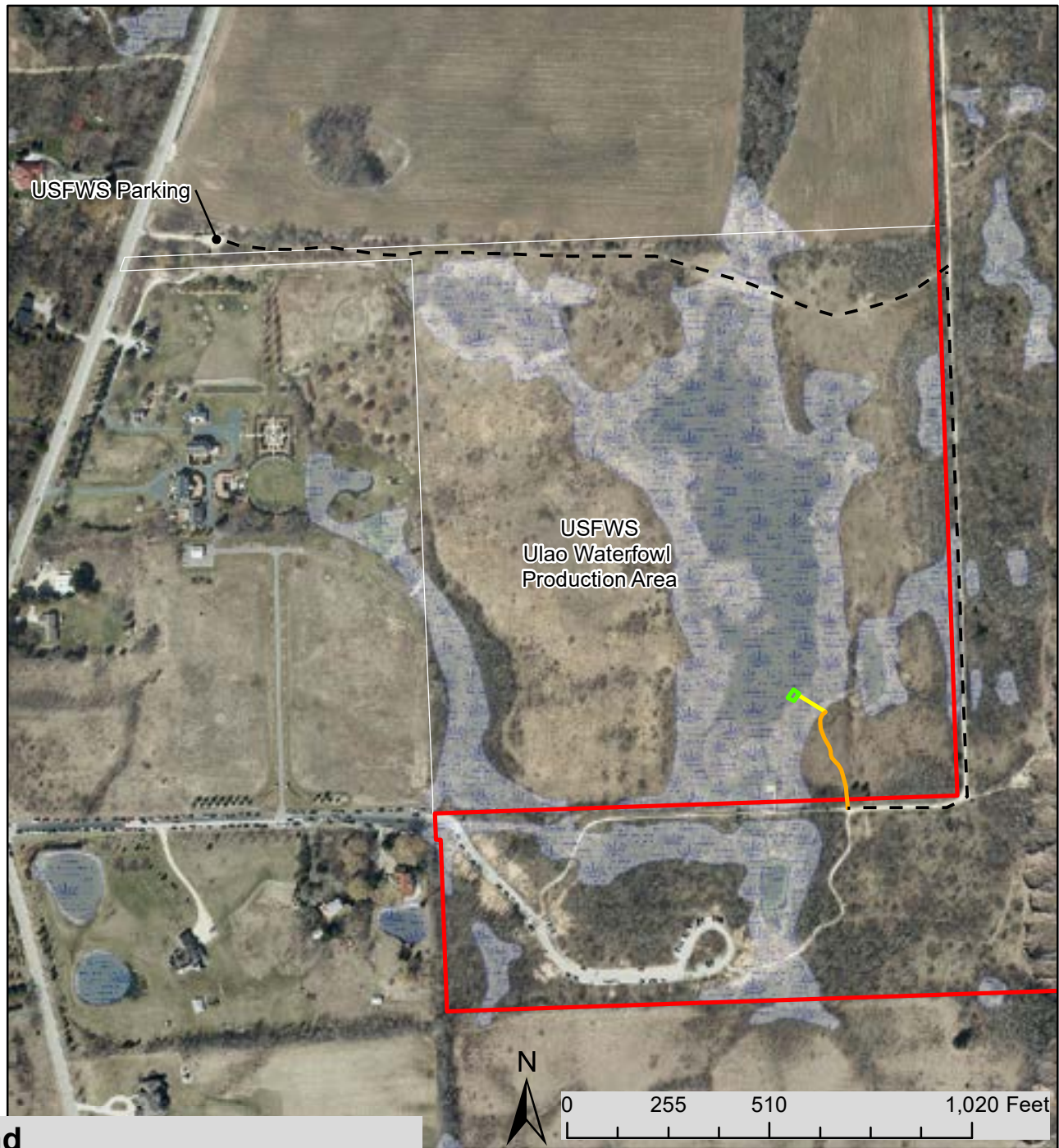
- A. The boardwalk should measure a minimum of approximately 80 feet long x 5 feet wide and extend from above the seasonally wet area to the observation platform, and include ADA compliant safety railings. The observation platform should be a minimum of 20 feet long x 25 wide, and include ADA compliant safety railings and a minimum of two benches. Lists of additional amenities options with photos are encouraged.
- B. Use of recycled materials are desirable depending on cost, but not a requirement.
- C. The Department will coordinate with the contractor and assist with general site preparation and vegetation clearing as necessary for construction.
- D. The boardwalk and platform should be a **floating system** designed to accommodate for changing water levels and meet applicable building code standards (e.g., adequate weight capacity for fully loaded) for public use. Specification sheets and/or engineered drawing submittals to demonstrate compatibility are required.
- E. The Department will coordinate with the successful contractor on the exact location of the boardwalk and platform. Attachment A indicates the general proposed location and access route through the Ulao WPA.
- F. The Department has secured permission from the US Fish and Wildlife Service for contractor vehicular access across the WPA property and for completion of this project, which is seasonally dependent (see Attachment A).
- G. Contractor will assist the Department with any required federal, state, or local permitting.
- H. Proposals should include product images and material specifications descriptions.
- I. Proposals should include a 3-year maintenance period.

121 W. Main Street, P.O. Box 994, Port Washington, WI 53074

Phone: (262) 284-8257 Phone Metro: (262) 238-8257 Fax: (262) 284-8269 Fax Metro: (262) 238-8269

- J. Proposals are due by 5:00pm on Monday, September 26. Proposals may be submitted electronically to [maho@co.ozaukee.wi.us](mailto:maho@co.ozaukee.wi.us).
- K. Lion's Den Gorge Nature Preserve and the USFWS Ulaio WPA are open to the public. Interested contractors may visit the site during open park hours.
- L. Questions can be directed to Matt Aho, Program Manager, at [maho@co.ozaukee.wi.us](mailto:maho@co.ozaukee.wi.us) or 262-623-2103.
- M. Ozaukee County anticipates awarding this contract on or about October 6, 2022. All work shall be substantially completed by July 15, 2023 with final completion by July 30, 2023.

# Lion's Den Gorge Nature Preserve - Proposed Boardwalk/Overlook Site Access

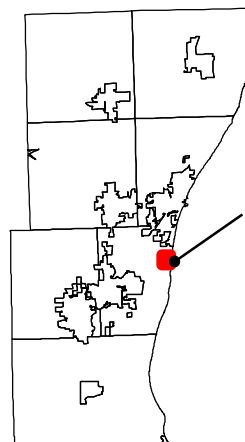


## Legend

- Lion's Den Gorge Nature Preserve
- USFWS Ulaio Waterfowl Production Area
- WI Wetland Inventory (2019)
- - - Site Access

## Proposed

- Boardwalk (Approx. 80 Feet)
- Overlook (Approx. 20 x 25 Feet)
- Trail (Approx. 260 Feet)



Lion's Den Gorge  
Nature Preserve, Town  
of Grafton  
Ozaukee County

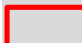







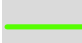

# Lion's Den Gorge Nature Preserve - Proposed Boardwalk/Overlook Location

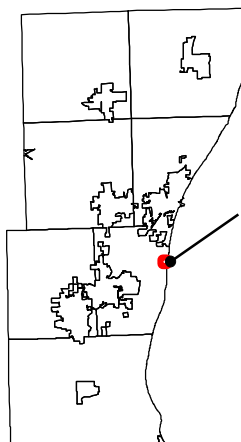


## Legend

-  Lion's Den Gorge Nature Preserve
-  WI Wetland Inventory (2019)
-  Elevation Line

## Proposed

-  Boardwalk (Approx. 80 Feet)
-  Overlook (Approx. 20 x 25 Feet)
-  Trail (Approx. 260 Feet)



Lion's Den Gorge  
Nature Preserve, Town  
of Grafton  
Ozaukee County



Ozaukee County Planning & Parks Dept.  
August, 2022