

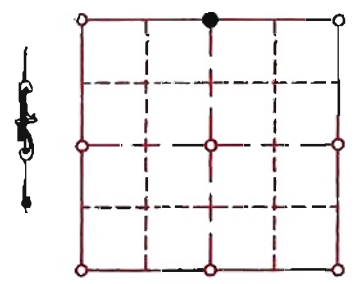
**"U.S. PUBLIC LAND SURVEY MONUMENT RECORD"**  
**OZAUKEE COUNTY, WISCONSIN**

CORNER INDEX No. 499  
 SECTION 5  
 TOWNSHIP 10  
 RANGE 21

TYPE OF MONUMENT: Berntsen Aluminum monument  
 STATE PLANE COORDINATES: N: 504498.03  
 E: 2519746.03  
 ELEVATION: 864.39 M.S.L. DATUM: 1929

FIELD BOOK: \_\_\_\_\_ PAGE: \_\_\_\_\_  
 FIELDWORK BY: Tom Genske & Dennis Van Sluys  
 RECORD DRAWN BY: MARK BANTON

CONTROL ACCURACY:  
 HORIZONTAL: 3RD ORDER, CLASS 1 VERTICAL: 3RD ORDER



LOCATION

BASIS OF MONUMENT LOCATION

12/11/84 - Dennis Van Sluys found a concrete nail  
 4/1986 - Tom Genske (County Surveyor) set monument

SEAL:

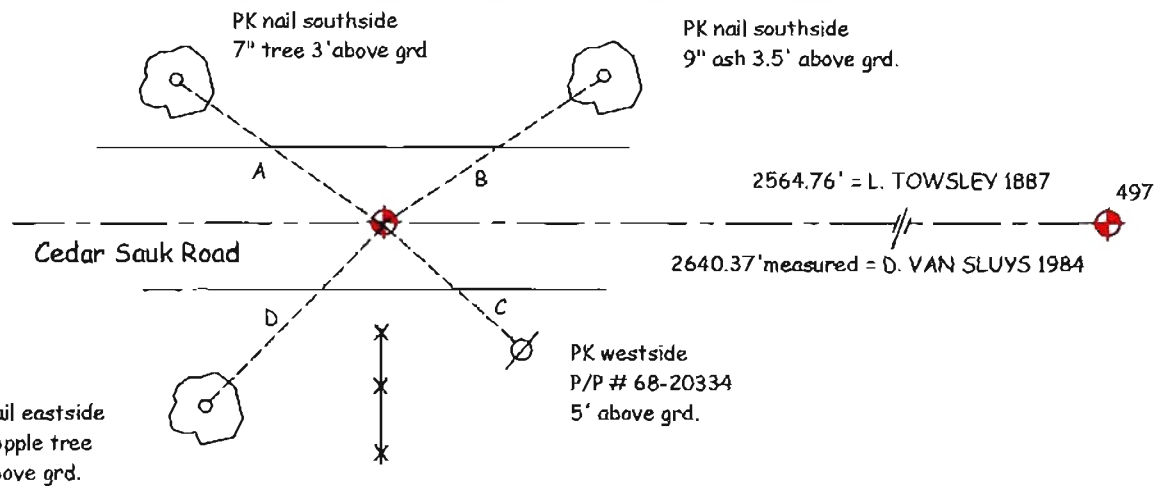


DATA SHOWN HEREON  
 IS CERTIFIED AS CORRECT:

*Mark Banton*  
 Ozaukee County Surveyor  
 DATE: 1-10-08

TIE SKETCH

- A = 40.91'
- B = 71.03'
- C = 52.95'
- D = 54.90'



MAINTENANCE RECORD

- MONUMENT LEGEND
- = BERNTSEN MONUMENT (SEE TYPE OF MON. ABOVE)
  - = CONCRETE MONUMENT w/ BRASS CAP
  - = CONCRETE MONUMENT w/ CROSS
  - = 5/8" REBAR WITH ALUMINUM CAP

DATE	BY WHOM	REMARKS
01-07-08	M.BANTON	REPLACE OLD DRAWING