

"U.S. PUBLIC LAND SURVEY MONUMENT RECORD"
OZAUKEE COUNTY, WISCONSIN

TYPE OF MONUMENT: Berntsen Aluminum monument

STATE PLANE COORDINATES: N: 504671.45

E: 2527653.73

ELEVATION: 868.91 M.S.L. DATUM: 1929

FIELD BOOK: _____ PAGE: _____

FIELDWORK BY: Tom Genske & Dennis Van Sluys

RECORD DRAWN BY: MARK BANTON

CONTROL ACCURACY:

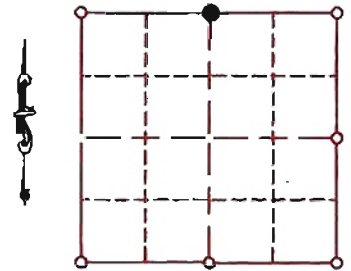
HORIZONTAL: 3RD ORDER, CLASS 1 VERTICAL: 3RD ORDER

CORNER INDEX No. 495

SECTION 4

TOWNSHIP 10

RANGE 21



LOCATION

BASIS OF MONUMENT LOCATION

SEAL:

Tom Genske (County Surveyor) established corner using single proportionate distances as surveyed by Dennis Van Sluys on 12/11/1984. Tom excavated a 5' x 30' x 4' deep area to old roadway road, found nothing, excavation centered to the east due to pro-rated distance being greater than re-survey distance.

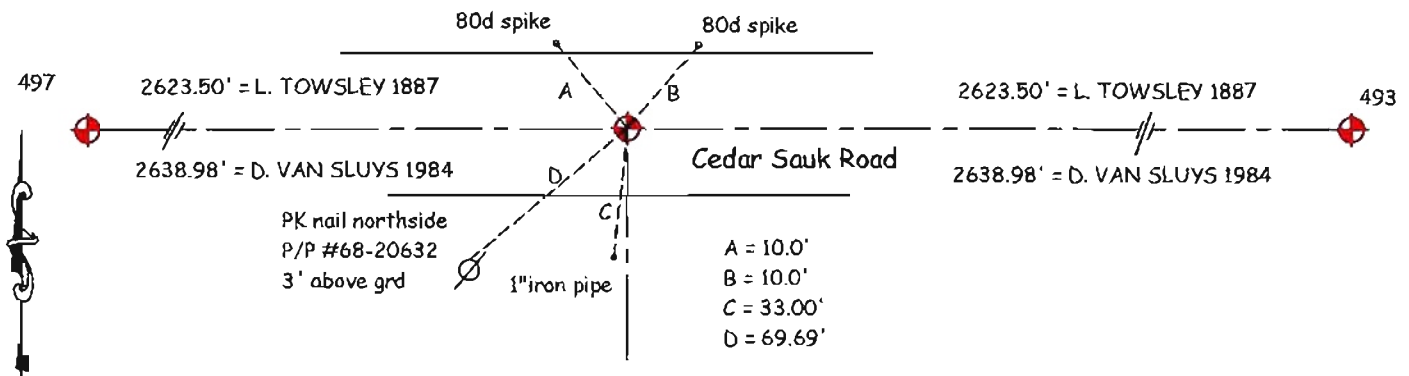


DATA SHOWN HEREON
IS CERTIFIED AS CORRECT:

Mark Banton
Ozaukee County Surveyor

DATE: 1-7-08

TIE SKETCH



MAINTENANCE RECORD

- MONUMENT LEGEND**
- = BERNTSEN MONUMENT (SEE TYPE OF MON. ABOVE)
 - = CONCRETE MONUMENT w/ BRASS CAP
 - = CONCRETE MONUMENT w/ CROSS
 - = 5/8" REBAR WITH ALUMINUM CAP

DATE	BY WHOM	REMARKS
01-07-08	M. BANTON	REPLACE OLD DRAWING