

"U.S. PUBLIC LAND SURVEY MONUMENT RECORD".
OZAUKEE COUNTY, WISCONSIN

TYPE OF MONUMENT: Berntsen plastic monument with brass cap

STATE PLANE COORDINATES: N: 505079.40

E: 2540835.83

ELEVATION: 788.09 M.S.L. DATUM: 1929

FIELD BOOK: Book 2 PAGE: 41

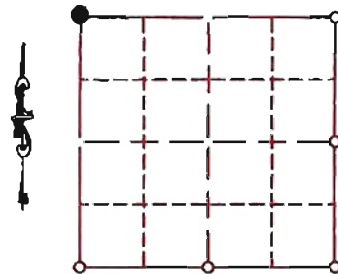
FIELDWORK BY: Tom Genske & Kapur and Associates

RECORD DRAWN BY: MARK BANTON

CONTROL ACCURACY:

HORIZONTAL: 3RD ORDER, CLASS 1 VERTICAL: 3RD ORDER

CORNER INDEX No. 485
 SECTION 1
 TOWNSHIP 10
 RANGE 21



LOCATION

BASIS OF MONUMENT LOCATION

Tom Genske (County Surveyor) established corner using recorded CSM. found a PK nail that checked Harry Brabender's dossier and the monumented E 1/4 corner of Section 2-10-21 extended east line of section 2-10-21, a distance of 9.93' to intersect the south line of section 34-11-21. Set a Berntsen plastic monument with 2" riser. Existing PK nail 0.27 feet northwesterly of corner as established.

SEAL:

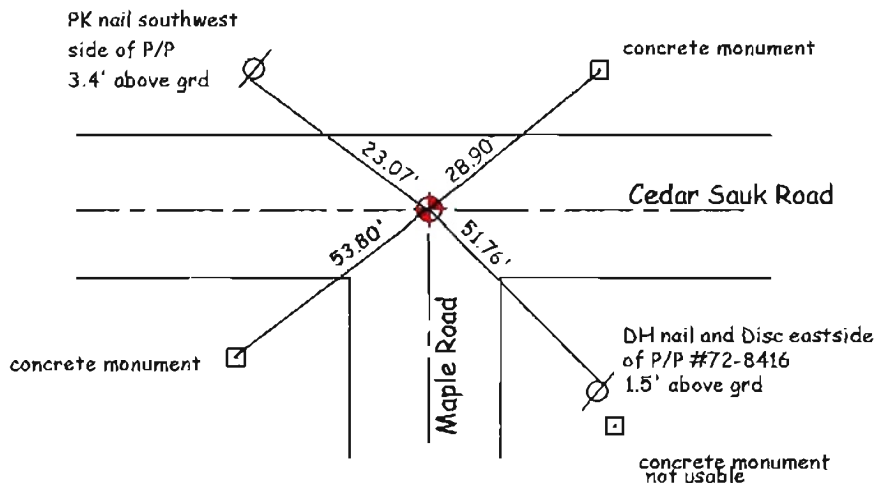


DATA SHOWN HEREON
 IS CERTIFIED AS CORRECT:

Mark Banton
 Ozaukee County Surveyor

DATE: 01-07-08

TIE SKETCH



MAINTENANCE RECORD

MONUMENT LEGEND

- = BERNTSEN MONUMENT (SEE TYPE OF MON. ABOVE)
- = CONCRETE MONUMENT w/ BRASS CAP
- = CONCRETE MONUMENT w/ CROSS
- = 5/8" REBAR WITH ALUMINUM CAP

DATE	BY WHOM	REMARKS
01-07-08	M.BANTON	RE-NUMBER CORNER