

RECORD OF U.S. PUBLIC LAND SURVEY CONTROL STATION

U.S. PUBLIC LAND SURVEY CORNER $\frac{9}{16}$ T 10 N, R 21 E, OZAUKEE COUNTY, WIS.

GEODETIC SURVEY BY: AERO-METRIC ENGINEERING, INC. YEAR: 1986

STATE PLANE COORDINATES OF: QUARTER SECTION CORNER		
NORTH	493,553.41	*493,553.91
EAST	2,528,102.53	*2,258,101.68

ELEVATION OF STATION: ~~890.90~~

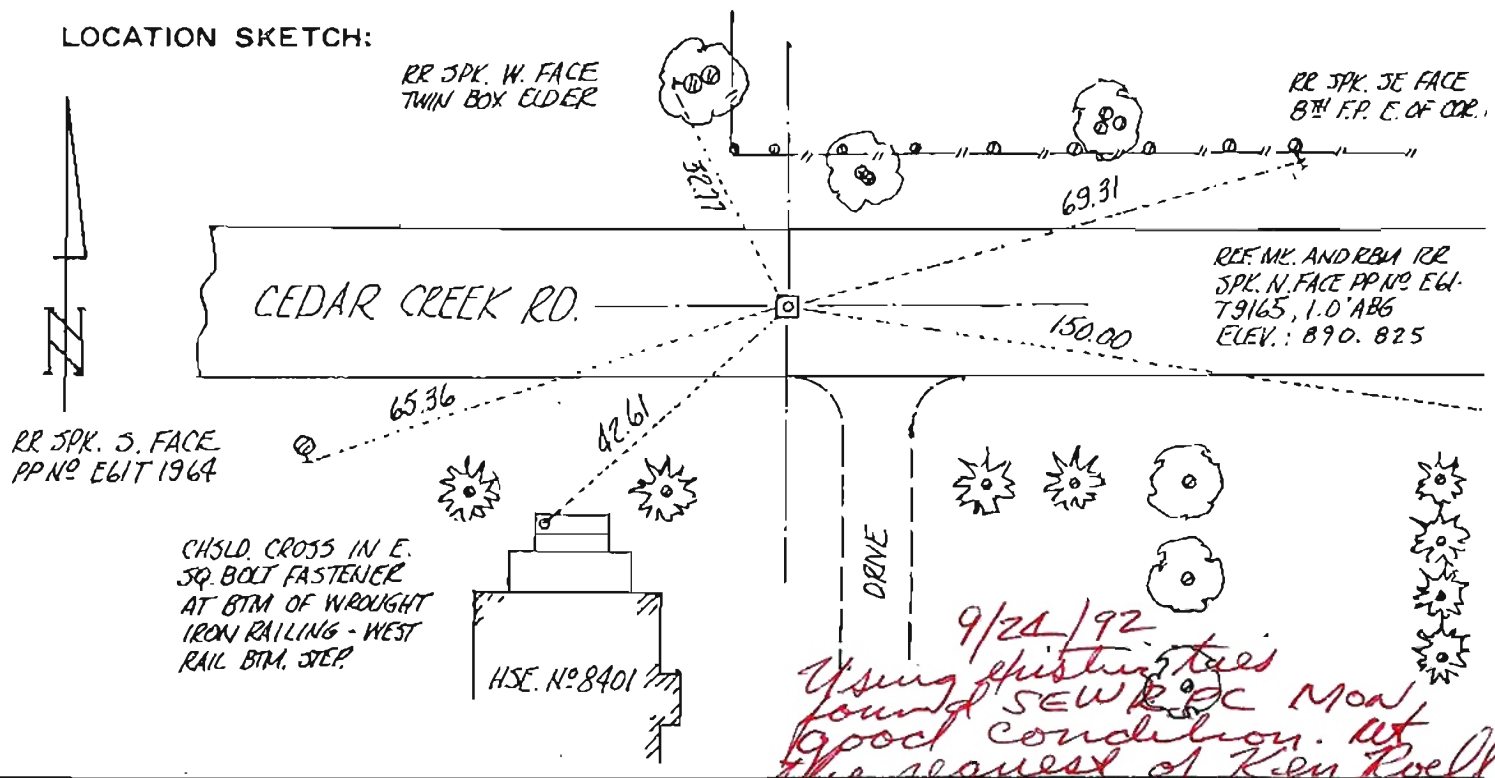
HORIZONTAL DATUM: WISCONSIN STATE PLANE COORDINATE SYSTEM, SOUTH ZONE

VERTICAL DATUM: NATIONAL GEODETIC VERTICAL DATUM OF 1929

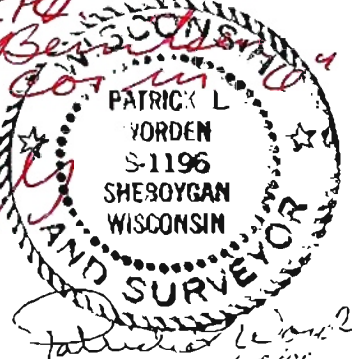
CONTROL ACCURACY: Kapur & Associates Inc. 1995 THETA ANGLE: +01-21-50

HORIZONTAL: THIRD ORDER, CLASS I VERTICAL: SECOND ORDER, CLASS II

LOCATION SKETCH:



9/24/92
Using existing ties found SEWRPC Mon good condition. At the request of Ken Poell repl. SEWRPC mon with Bestcon 4' x 4' x 4' fill area



SURVEYOR'S AFFIDAVIT:

STATE OF WISCONSIN)
 OZAUKEE COUNTY) SS

I HEREBY CERTIFY THAT I recovered limestone monument previously accepted as corner 8" below road surface. Also found P.K. nail .75' south and .5' east of monument location and 1/4" iron pipe 3.0' west of correct corner. Accepted limestone as correct and replaced with standard S.E.W.R.P.C. concrete monument.

DATE OF SURVEY: 4/30/86 Patrick L. Worden S - 1196 REGISTERED LAND SURVEYOR