

U.S. PUBLIC LAND SURVEY MONUMENT RECORD
OZAUKEE COUNTY **251**

QUARTER SECTION CORNER 31 | 32 TOWN 10 NORTH, RANGE 21 EAST
CITY OF MEQUON, OZAUKEE COUNTY

WISCONSIN STATE PLANE COORDINATES: NORTH 472,165.88
EAST 2,520,963.67

THETA ANGLE + 1-20-39 ELEVATION OF CORNER: ~~877.646~~
877.62 K.A.
1995

HORIZONTAL DATUM: WISCONSIN STATE PLANE SYSTEM, SOUTH ZONE
NORTH AMERICAN DATUM 1927 ADJUSTMENT
VERTICAL DATUM: MEAN SEA LEVEL 1929 ADJUSTMENT

HORIZONTAL CONTROL ACCURACY: 3RD ORDER, CLASS 1
VERTICAL CONTROL ACCURACY: 2ND ORDER, CLASS 2 MONUMENT NO. 167

DESCRIPTION OF MONUMENT: USING EXISTING SURVEYS, EXCAVATED AT SOUTHEAST
CORNER SECTION 31 AND FOUND A CONCRETE MONUMENT TWO FEET BELOW SURFACE OF
PAVEMENT. ACCEPTED AS CORRECT AND REPLACED WITH A BERNTSEN W-1-B ALUMINUM
MONUMENT AND REFERENCED THE SAME AS SHOWN HEREON.

CERTIFICATION

I certify that the corner location on this record was determined by me or under my direction and control and that this U.S. Public Land Survey Monument Record is correct and complete to the best of my knowledge and belief.

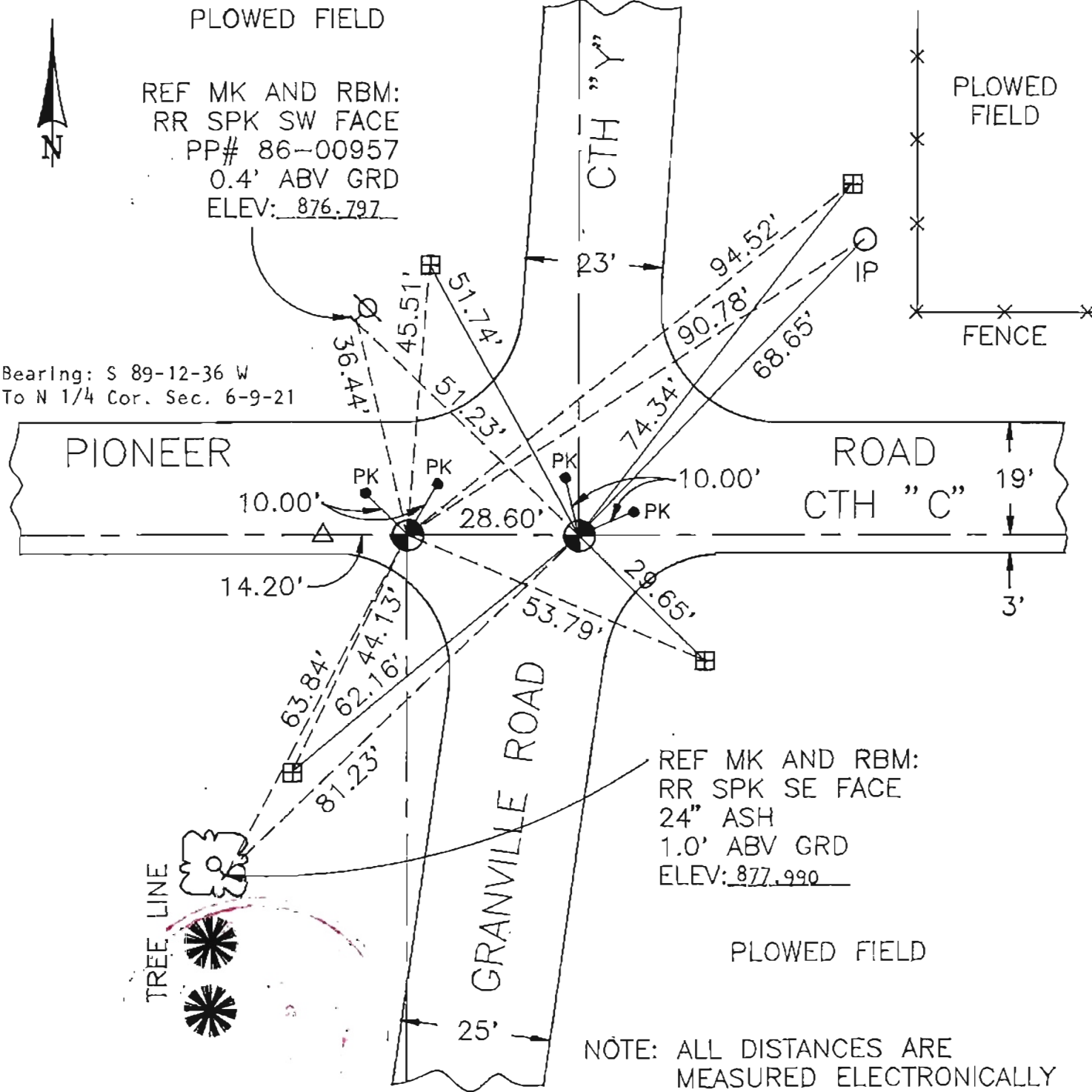


SIGNATURE Thomas J. Genske
Ozaukee County Surveyor

S-1317 DATE: 6/28/94

U.S. PUBLIC LAND SURVEY MONUMENT RECORD OZAUKEE COUNTY

PLAN VIEW OF CORNER WITH TIES TO A MINIMUM 4 WITNESS MONUMENTS



Bearing: S 89-12-36 W
To N 1/4 Cor. Sec. 6-9-21

MON NO 167, R21
MAINTENANCE RECORD

DATE	INIT	REMARKS