

**"U.S. PUBLIC LAND SURVEY MONUMENT RECORD"**  
**OZAUKEE COUNTY, WISCONSIN**

CORNER INDEX No. 908-4  
 SECTION 18  
 TOWNSHIP 12  
 RANGE 23

TYPE OF MONUMENT: Berntsen monument w/ brass cap

STATE PLANE COORDINATES: N: 554189.79

E: 2585322.73

ELEVATION: 586.42 M.S.L. DATUM: 1929

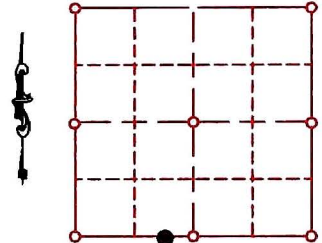
FIELD BOOK: K&A folder PAGE: 710

FIELDWORK BY: KAPUR AND ASSOCIATES - 1999

RECORD DRAWN BY: MARK BANTON

CONTROL ACCURACY:

HORIZONTAL: 3RD ORDER, CLASS 1 VERTICAL: 3RD ORDER



LOCATION

SEAL:



BASIS OF MONUMENT LOCATION

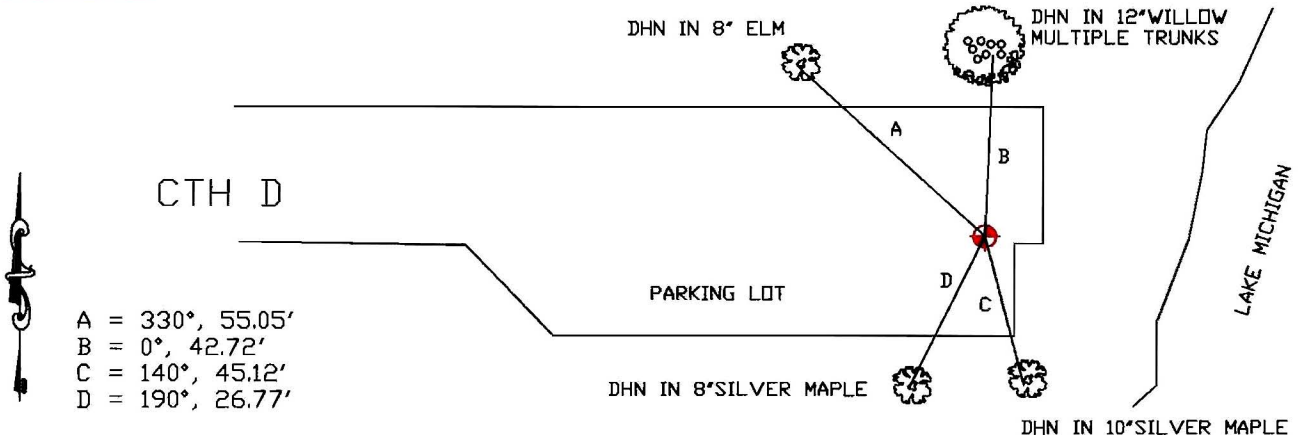
1999- Kapur and associates found a Pk nail called for on previous surveys.  
 Set a Berntsen monument with brass cap at said location

DATA SHOWN HEREON  
 IS CERTIFIED AS CORRECT:

*Mark Banton 3 Feb 07*  
 Ozaukee County Surveyor

DATE: 11-20-2004

TIE SKETCH



- A = 330°, 55.05'
- B = 0°, 42.72'
- C = 140°, 45.12'
- D = 190°, 26.77'

MAINTENANCE RECORD

- MONUMENT LEGEND
- = BERNTSEN MONUMENT ( SEE TYPE OF MON. ABOVE)
  - = CONCRETE MONUMENT w/ BRASS CAP
  - = CONCRETE MONUMENT w/ CROSS
  - = 5/8" REBAR WITH ALUMINUM CAP

DATE	BY WHOM	REMARKS
3 feb 07	M.BANTON	RE-NUMBER CORNER