

**"U.S. PUBLIC LAND SURVEY MONUMENT RECORD"
OZAUKEE COUNTY, WISCONSIN**

TYPE OF MONUMENT: Berntsen Plastic monument w/ brass cap

STATE PLANE COORDINATES: N: 548842.45

E: 2583549.93

ELEVATION: 612.34 M.S.L. DATUM: 1929

FIELD BOOK: Belgium PAGE: 656

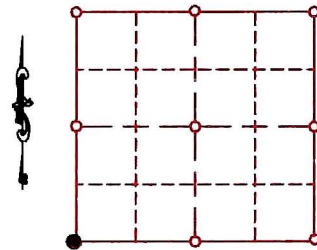
FIELDWORK BY: Kapur and Associates

RECORD DRAWN BY: MARK BANTON

CONTROL ACCURACY:

HORIZONTAL: 3RD ORDER, CLASS 1 VERTICAL: 3RD ORDER

CORNER INDEX No. 857
SECTION 19
TOWNSHIP 12
RANGE 23



LOCATION

BASIS OF MONUMENT LOCATION

SEAL:

Tom Genske 1992 - using one remaining concrete witness monument, I found a 1" iron pipe called for on County Surveyor- Harry Brabende's 10/21/70 dossier sheet. No other monuments found. Accepted pipe as corner and replaced with a Berntsen Aluminum monument with 2" riser.
Kapur and Associates 1999 - found monument broken and replaced with Berntsen Plastic monument w/brass cap
Mark Banton 2005- draw dossier to show Kapur and Associates work



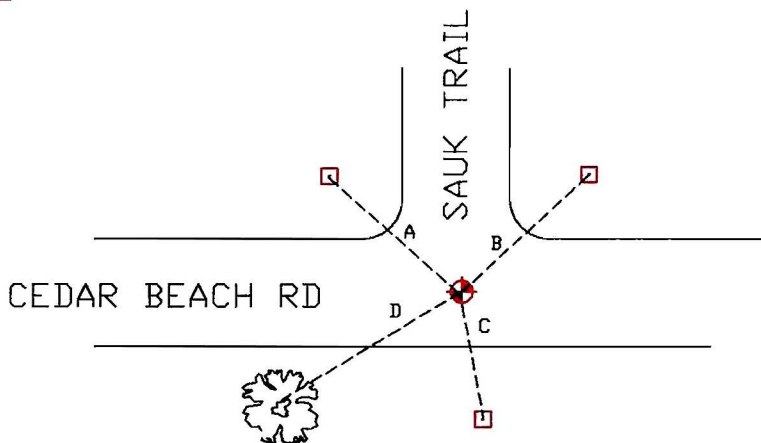
DATA SHOWN HEREON
IS CERTIFIED AS CORRECT:

Mark Banton 5 Feb 07

Ozaukee County Surveyor

DATE: 01-05-2005

TIE SKETCH



A = 317°, (46.92'R) 46.83'
B = 41°, (50.00'R) 49.95'
C = 175°, 29.67'
D = 233°, 36.73'

DHN in 4" ash
3' above grd

MAINTENANCE RECORD

- MONUMENT LEGEND
- = BERNTSEN MONUMENT (SEE TYPE OF MON. ABOVE)
 - = CONCRETE MONUMENT W/ BRASS CAP
 - = CONCRETE MONUMENT W/ CROSS
 - = 5/8" REBAR WITH ALUMINUM CAP

DATE	BY WHOM	REMARKS
5 feb 07	m.banton	re-number corner