

**"U.S. PUBLIC LAND SURVEY MONUMENT RECORD"
OZAUKEE COUNTY, WISCONSIN**

CORNER INDEX No. 856-4
SECTION 19
TOWNSHIP 12
RANGE 23

TYPE OF MONUMENT: Berntsen monument w/ brass cap

STATE PLANE COORDINATES: N: 548893.83

E: 2584836.02

ELEVATION: 588.42 M.S.L. DATUM: 1929

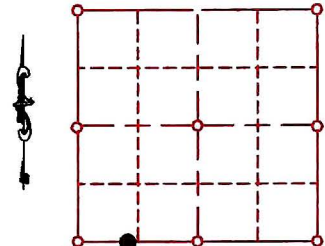
FIELD BOOK: K&A folder PAGE: 684

FIELDWORK BY: KAPUR AND ASSOCIATES - 1999

RECORD DRAWN BY: MARK BANTON

CONTROL ACCURACY:

HORIZONTAL: 3RD ORDER, CLASS 1 VERTICAL: 3RD ORDER



LOCATION

SEAL:

BASIS OF MONUMENT LOCATION

1999- Kapur and associates set corner from existing surveys and 33' offset from established r-o-w

Set a Berntsen monument with brass cap at said location



DATA SHOWN HEREON
IS CERTIFIED AS CORRECT:

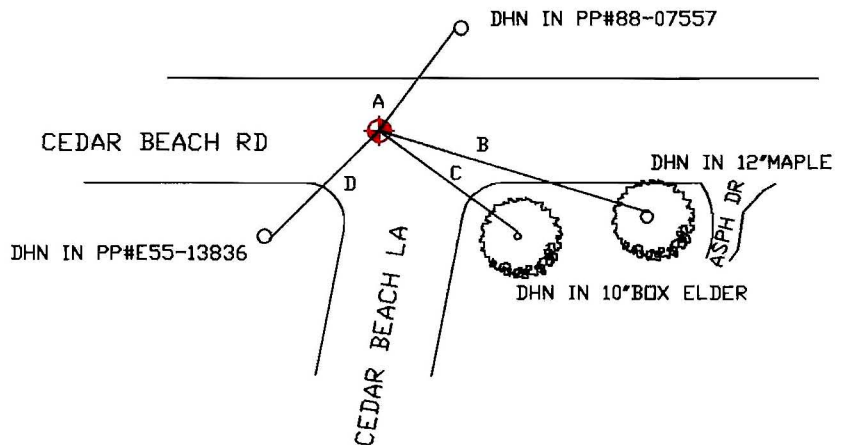
Mark Banton 3 Feb 07

Ozaukee County Surveyor

DATE: 11-20-2004

TIE SKETCH

- A = 40°, 36.05'
- B = 121°, 61.81'
- C = 141°, 32.95'
- D = 191°, 37.15'



MAINTENANCE RECORD

- MONUMENT LEGEND
- = BERNTSEN MONUMENT (SEE TYPE OF MON. ABOVE)
 - = CONCRETE MONUMENT w/ BRASS CAP
 - = CONCRETE MONUMENT w/ CROSS
 - = 5/8" REBAR WITH ALUMINUM CAP

DATE	BY WHOM	REMARKS
3 FEB 07	M. BANTON	RE-NUMBER CORNER