

**"U.S. PUBLIC LAND SURVEY MONUMENT RECORD"
OZAUKEE COUNTY, WISCONSIN**

TYPE OF MONUMENT: Plastic Bernsten Monument w/ brass cap

STATE PLANE COORDINATES: N: 567419.63

E: 2583108.81

ELEVATION: 659.34 M.S.L. DATUM: 1929

FIELD BOOK: K&A folder PAGE: 839

FIELDWORK BY: KAPUR AND ASSOCIATES - 1999

RECORD DRAWN BY: MARK BANTON

CONTROL ACCURACY:

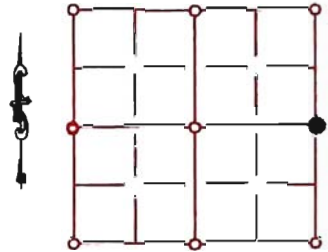
HORIZONTAL: 3RD ORDER CLASS 1 VERTICAL: 3RD ORDER

CORNER INDEX No. 1062

SECTION 1

TOWNSHIP 12

RANGE 22



LOCATION

SEAL:

BASIS OF MONUMENT LOCATION

1992 - Thomas Genske used 3 concrete witness monuments and found a railroad spike in the pavement surface. concrete monument with broken top found 11 inches below spike. nothing else found. accepted concrete monument as corner and replaced with bernsten aluminum monument with 2" riser.

1999 - Kapur and Associates found broken aluminum monument and replaced with a plastic bernsten monument with brass cap



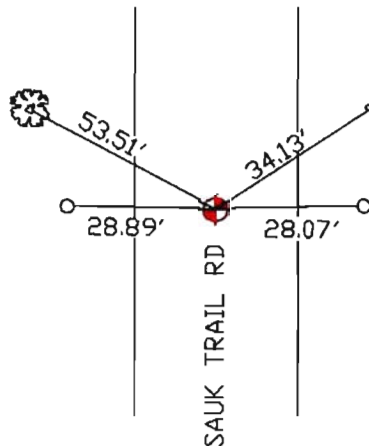
DATA SHOWN HEREON
IS CERTIFIED AS CORRECT:

Mark Banton

Ozaukee County Surveyor

DATE: 01-05-2005 *1 FEB 07*

TIE SKETCH



MAINTENANCE RECORD

- MONUMENT LEGEND:
- = BERNSTEIN MONUMENT (SEE TYPE OF MON. ABOVE)
 - = CONCRETE MONUMENT w/ BRASS CAP
 - = CONCRETE MONUMENT w/ CROSS
 - = 5/8" REBAR WITH ALUMINUM CAP

DATE	BY WHOM	REMARKS
1 FEB 07	M. BANTON	RE-NUMBER CORNER