

"U.S. PUBLIC LAND SURVEY MONUMENT RECORD"
OZAUKEE COUNTY, WISCONSIN

TYPE OF MONUMENT: Bernten Monument w/ brass cap

STATE PLANE COORDINATES: N: 564763.99

E: 2583171.44

ELEVATION: 651.15 M.S.L. DATUM: 1929

FIELD BOOK: K&A folder PAGE: 814

FIELDWORK BY: TOM GENSKE 1993

RECORD DRAWN BY: MARK BANTON

CONTROL ACCURACY:

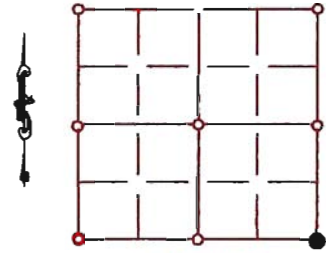
HORIZONTAL: 3RD ORDER CLASS 1 VERTICAL: 3RD ORDER

CORNER INDEX No. 1013

SECTION 1

TOWNSHIP 12

RANGE 22



LOCATION

SEAL:



BASIS OF MONUMENT LOCATION

Tom Genske -using existing ties, I found a limestone monument eleven inches below the pavement. The limestone monument called for in Tousley's 1878 remonumentation map accepted the limestone monument as the corner and set a berntsen aluminum monument at the location.

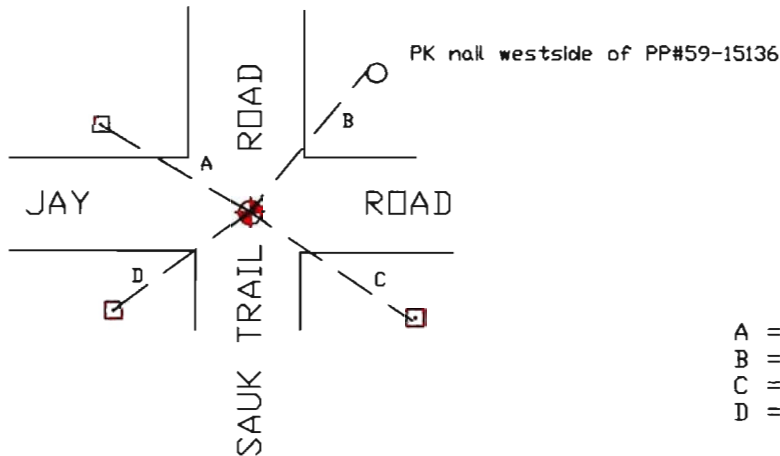
Redrawn in 2004 to add coordinates and elevation

DATA SHOWN HEREON
IS CERTIFIED AS CORRECT:

Mark Banton 2 FEB 07
Ozaukee County Surveyor

DATE: 11-01-2004

TIE SKETCH



- A = 42.89'
- B = 63.90'
- C = 43.11'
- D = 47.47'

MAINTENANCE RECORD

- MONUMENT LEGEND
- = BERNTSEN MONUMENT (SEE TYPE OF MON. ABOVE)
 - = CONCRETE MONUMENT w/ BRASS CAP
 - = CONCRETE MONUMENT w/ CROSS
 - = 5/8" REBAR WITH ALUMINUM CAP

DATE	BY WHOM	REMARKS
1 FEB 07	M. BANTON	RE-NUMBER CORNER