

**"U.S. PUBLIC LAND SURVEY MONUMENT RECORD"
OZAUKEE COUNTY, WISCONSIN**

CORNER INDEX No. 1010
SECTION 12
TOWNSHIP 12
RANGE 22

TYPE OF MONUMENT: Berntsen aluminum monument

STATE PLANE COORDINATES: N: 562108.54

E: 2583232.98

ELEVATION: 641.29 M.S.L. DATUM: 1929

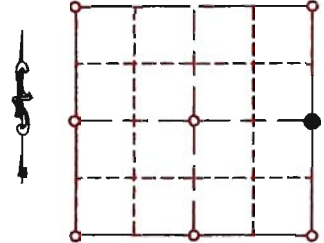
FIELD BOOK: _____ PAGE: _____

FIELDWORK BY: Tom Genske 1993

RECORD DRAWN BY: MARK BANTON

CONTROL ACCURACY:

HORIZONTAL: 3RD ORDER CLASS 1 VERTICAL: 3RD ORDER



LOCATION

SEAL:



BASIS OF MONUMENT LOCATION

TOM GENSKE - USING OLD RECORDED TIES, FOUND LIMESTONE MONUMENT CALLED FOR ON TOUSLEY'S 1878 RE-MONUMENTATION MAP TWELVE INCHES BELOW SURFACE. ACCEPTED LIMESTONE MONUMENT AS THE CORNER AND REPLACED WITH A BERNTSEN ALUMINUM MONUMENT

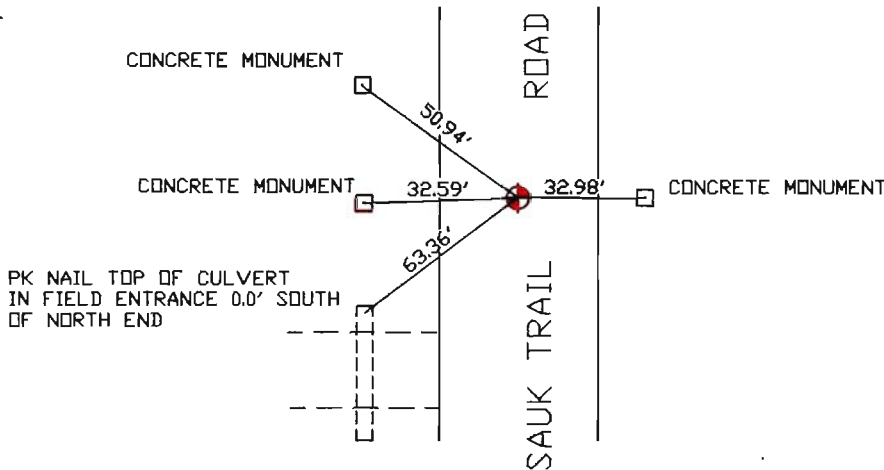
MARK BANTON - REDRAWN USING TOM'S TIE SHEET TO SHOW CO-ORDINATES AND ELEVATION

DATA SHOWN HEREON
IS CERTIFIED AS CORRECT:

Mark Banton 2 FEB 07
Ozaukee County Surveyor

DATE: 11-20-2004

TIE SKETCH



MAINTENANCE RECORD

- MONUMENT LEGEND
- = BERNTSEN MONUMENT (SEE TYPE OF MON. ABOVE)
 - = CONCRETE MONUMENT w/ BRASS CAP
 - = CONCRETE MONUMENT w/ CROSS
 - = 5/8" REBAR WITH ALUMINUM CAP

DATE	BY WHOM	REMARKS
2 Feb 07	M. BANTON	RE-NUMBER SECTION CORNER