

**"U.S. PUBLIC LAND SURVEY MONUMENT RECORD"
OZAUKEE COUNTY, WISCONSIN**

CORNER INDEX No. 901-4
SECTION 22
TOWNSHIP 12
RANGE 22

TYPE OF MONUMENT: CONCRETE MONUMENT w/BRASS CAP

STATE PLANE COORDINATES: N: 551204.86

E: 2570262.65

ELEVATION: 732.88 M.S.L. DATUM: 1929

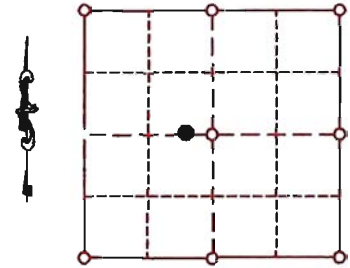
FIELD BOOK: K&A folder PAGE: 678

FIELDWORK BY: KAPUR AND ASSOCIATES

RECORD DRAWN BY: MARK BANTON

CONTROL ACCURACY:

HORIZONTAL: 3RD ORDER CLASS 1 VERTICAL: 3RD ORDER



LOCATION

SEAL:

BASIS OF MONUMENT LOCATION

DURING RE-MONUMENTATION PROGRAM FOR OZAUKEE COUNTY
KAPUR AND ASSOCIATES SET A WITNESS CORNER WESTERLY OF MATH CORNER
ACTUAL CORNER FALLS IN IRRIGATION DITCH



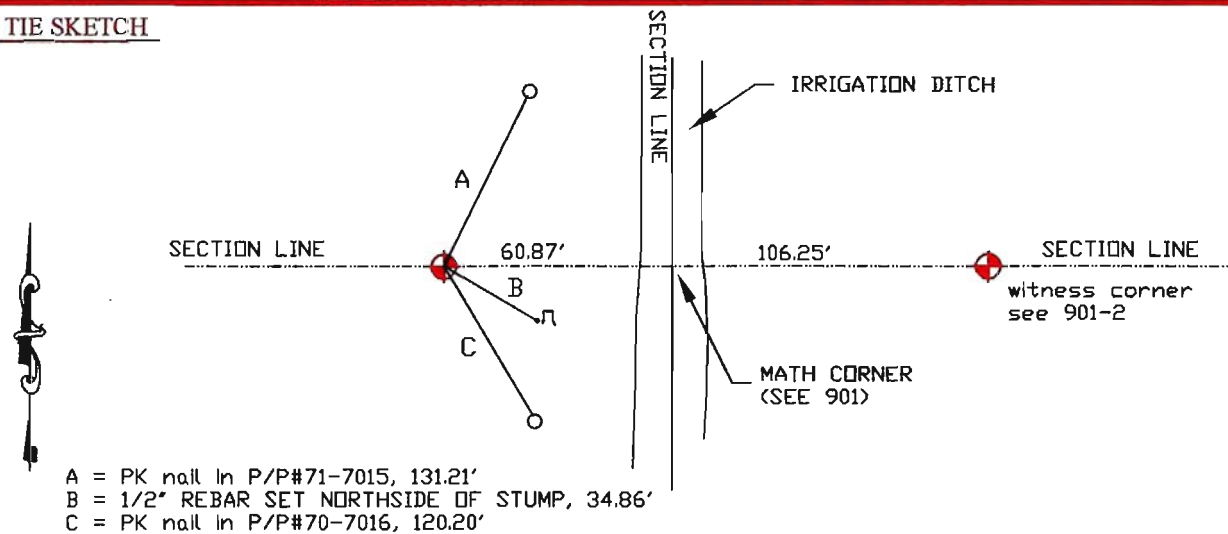
DATA SHOWN HEREON
IS CERTIFIED AS CORRECT:

Mark Banton

Ozaukee County Surveyor

DATE: 29 JANUARY 2007

TIE SKETCH



- A = PK nail in P/P#71-7015, 131.21'
- B = 1/2" REBAR SET NORTHSIDE OF STUMP, 34.86'
- C = PK nail in P/P#70-7016, 120.20'

MAINTENANCE RECORD

DATE	BY WHOM	REMARKS

MONUMENT LEGEND

- = BERNTSEN MONUMENT (SEE TYPE OF MON. ABOVE)
- = CONCRETE MONUMENT w/ BRASS CAP
- = CONCRETE MONUMENT w/ CROSS
- = 5/8" REBAR WITH ALUMINUM CAP