

Comprehensive Planning Law

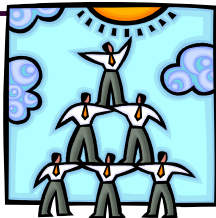
In 1999, the Wisconsin Legislature enacted a new comprehensive planning law, often referred to as the “Smart Growth” law. The comprehensive plan required by the law must include recommendations for land use, housing, economic development, agricultural and natural resources, transportation, utilities and community facilities, and intergovernmental cooperation.



Who is Participating?

Local governments participating in the Ozaukee County Multi-Jurisdictional Comprehensive Planning Process include:

City of Mequon	Village of Thiensville
City of Port Washington	Town of Belgium
Village of Belgium	Town of Cedarburg
Village of Fredonia	Town of Fredonia
Village of Grafton	Town of Grafton
Village of Newburg	Town of Port Washington
Village of Saukville	Town of Saukville



County Contacts:

Ozaukee County Planning and Parks Department

Andrew Struck

Director

Phone: (262) 284-8275

Email: astruck@co.ozaukee.wi.us

Nicole Sidoff

Comprehensive Planning Intern

Phone: (262) 284-8276

Email: prlintern2@co.ozaukee.wi.us

Southeastern Wisconsin Regional Planning Commission

Ben McKay

Senior Planner

Phone: (262) 547-6722 Ext. 229

Email: bmckay@sewrpc.org

Ozaukee County

Multi-Jurisdictional Comprehensive Plan



OPEN HOUSE

Tuesday, March 11, 2008
6:30 - 8:30 PM

Your opportunity to comment on the
Ozaukee County Multi-Jurisdictional
Comprehensive Plan



MARCH 11, 2008

OZAUKEE COUNTY MULTI-JURISDICTIONAL COMPREHENSIVE PLAN OPEN HOUSE

Ozaukee County Administration Center Auditorium
121 W. Main Street

Port Washington, WI 53074

Open House: 6:30 - 8:30 PM

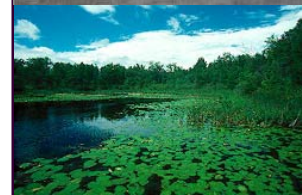
Presentation: 6:30 - 7:00 PM

(Refreshments will be served)

You are welcome to stop by anytime during the open house to help shape the future of Ozaukee County. Information on the Ozaukee County Comprehensive Plan, including maps, inventory and projection data, and policy recommendations, will be on display. Staff will be available to answer any questions and to record any comments you may have regarding the Comprehensive Plan for Ozaukee County: 2035.

This is your opportunity to comment on policy recommendations for:

- Future Land Use Issues
- Natural Resource Protection
- Farmland Preservation
- Economic Development
- Housing
- Transportation
- Intergovernmental Cooperation Initiatives



YOU'RE INVITED!

MARCH 19, 2008

Presentation of Plan to County Board and Public Hearing

MARCH 20, 2008

Citizen Advisory Committee
Reviews and Recommends Plan to
Comprehensive Planning Board

MARCH 25, 2008

Comprehensive Planning Board
Recommends Plan for
County Board Consideration

APRIL 2, 2008

County Board
Considers Plan for Adoption



For more information on the Ozaukee County Comprehensive Plan, please visit our website: www.co.ozaukee.wi.us/smartgrowth