

DIRECTIONS

From the North:

Head south on Interstate 43 towards Mequon. Take exit 89 towards County Highway C. Turn right (west) at Pioneer Rd./County Highway C. Turn left (south) at Green Bay Rd. Turn right (west) onto W Bonniwell Rd. The park entrance will be on the left (south).

From the South:

Head north on Interstate 43 towards Mequon. Take exit 89 towards County Highway C. Turn left (west) at Pioneer Rd./County Highway C. Turn left (south) at Green Bay Rd. Turn right (west) onto W Bonniwell Rd. The park entrance will be on the left (south).

From the East:

Head west on Highland Rd. towards Thiensville. Turn right (north) onto Green Bay Rd. The park entrance will be on the left (west).

From the West:

Head east on WI-60 towards Cedarburg. Turn right (south) onto WI-181/Washington Ave. Stay right at the fork and continue to follow WI-181/Wauwatosa Rd. towards Mequon. Turn left (east) at W. Bonniwell Rd. The park entrance will be on the right (south).



OZAUKEE COUNTY
PLANNING & PARKS
DEPARTMENT
121 W. MAIN STREET
P.O. BOX 994
PORT WASHINGTON, WI
53074

T 262.238.8257
F 262.238.8269

MEE-KWON COUNTY PARK



6333 W. BONNIWELL ROAD
MEQUON, WI

*Discover the natural beauty of
Ozaukee County...*

REV 2010.12.08 [LC]

[www.co.ozaukee.wi.us/
PlanningParks](http://www.co.ozaukee.wi.us/PlanningParks)

**OZAUKEE COUNTY
PARK SYSTEM**

DISCOVER MEE-KWON PARK

WHY VISIT?

Mee-Kwon County Park offers Mule Hill - the County's best known sledding hill. Mee-Kwon Park has one of the highest elevations in Ozaukee County and Mule Hill lives up to that expectation.

Mee-Kwon County Park also offers a baseball diamond, fishing on a 3-acre pond, walking, wildlife viewing, and hiking. Additionally, there are a variety of winter activities to participate in at Mee-Kwon, such as x-country skiing, ice skating, and sledding.



THE HISTORY:

Added to the Ozaukee County Park System in 1972, Mee-Kwon Park and Golf Course consist of 240 acres of open space. The land was once owned by the Fromm Brothers Fox Farms Corporation.

The land was purchased using a federal Housing and Urban Development (HUD) Urban Green Space Grant for development of passive use parkland. The grant requires the property



to be maintained as passive use parkland in perpetuity. Some of the remnants of the farm still remain. Many of the maintenance buildings that are used for storing course equipment are from the original Fox Farm. Back then, the buildings were used to construct fox and mink pens during the heyday of that industry.



ACTIVITIES & AMENITIES:

Baseball Diamond

Birding/Wildlife Viewing

Fishing

Ice Skating

Leashed Dogs

Mule Sledding Hill

Nature Trails

Picnicking

Portable Toilets

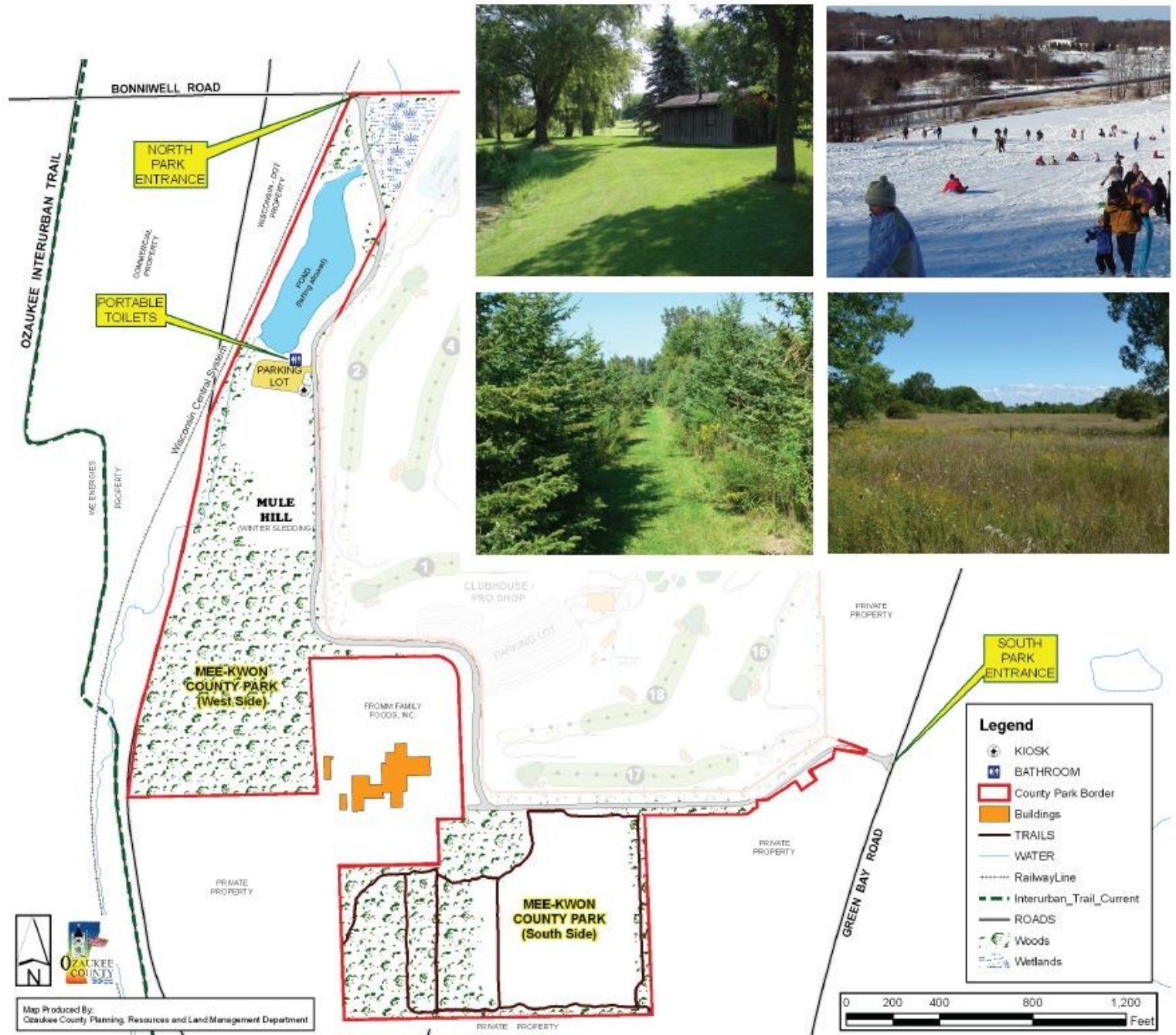
X-Country Skiing

PARK SIZE: 63.4 acres

YEAR ACQUIRED: 1972

COST OF ACQUISITION: \$205,011

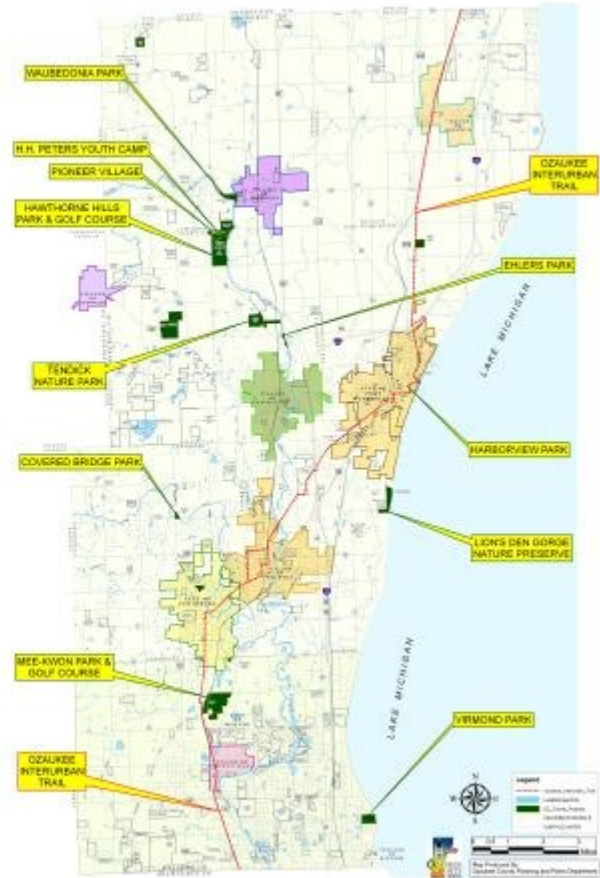




MEE-KWON COUNTY PARK MAP

OZAUKEE COUNTY PARKS GUIDE

	Madison Park & Golf Course 341-5868	Wood Park 343-1310	Claytonville Center 375-6851	Leeward Ridge Park 493-8825	Leeward Ridge Park 493-8825	East Oak Ridge Nature Preserve 493-8825	Swedish Nature Park 238-8257	Northwest Hills Park & Golf Course 493-8825	Superior Park 338-8157	Madison Park 493-2151	Madison Park 493-2825
Phone (502)											
Baseball	●	●									●
Canoe / Kayak Access				●	●			●			●
Camping											●
Disc Golf								●			
Drinking Water	●	●	●	●	●			●		●	●
Fishing		●		●	●			●			●
Golf Course		●								●	●
Historic Feature(s)				●				●		●	●
Ice Skating / Rink(s)		●	●								
Lake Michigan Access							●				
Leashed Dogs	●	●		●	●			●		●	●
Lodger Rooms		●		●							●
Lodging											●
Nature Trails / Area	●	●		●	●			●		●	●
Picnic / Grills	●	●		●	●			●		●	●
Pro Shop				●							●
Restaurant		●									●
Restrooms / Trailers	●	●	●	●	●			●		●	●
Sand Volleyball	●							●			
Shelter	●										●
Skating		●									●
Snowmobile Trail Access				●	●						●
Snow	●										●
Events	●										●
Wildlife Viewing	●	●		●	●			●		●	●
X-Country Skiing	●	●					●	●		●	●



OZAUKEE COUNTY PARKS MAP