

700

OZAUKEE COUNTY

U.S. PUBLIC LAND SURVEY MONUMENT RECORD

U.S. P.L.S. CORNER $\frac{11}{12}$ T. 11 N., R. 21 E. OZAUKEE COUNTY, WI

GEODETIC SURVEY BY: KAPUR & ASSOCIATES, INC. YEAR: 1997

STATE PLANE COORDINATES OF:
NORTH 531985.35
EAST 2549553.09

ELEVATION OF STATION: 792.65

HORIZONTAL DATUM: WISCONSIN STATE PLANE COORDINATE, SOUTH ZONE
NORTH AMERICAN DATUM: X 1927 1983
VERTICAL DATUM: NATIONAL GEODETIC VERTICAL DATUM OF 1929

CONTROL ACCURACY: THETA ANGLE: 1-25-18.76

HORIZONTAL: 3RD ORDER, CLASS 1: VERTICAL: 3RD ORDER

DESCRIPTION OF MONUMENT AND HOW LOCATION WAS DETERMINED:

SET LOCATION FROM PREVIOUS TIE SHEET.
FOUND CONC. MONUMENT TIES 33' N. & 33' S. AS NOTED ON TIE SHEET.
SET BERNTSEN ALUMINUM MONUMENT ON LINE BETWEEN.

CERTIFICATION

I CERTIFY THAT THE CORNER LOCATION ON THIS RECORD WAS DETERMINED BY ME OR UNDER MY DIRECTION AND CONTROL AND THAT THIS U.S. PUBLIC LAND SURVEY MONUMENT RECORD IS CORRECT AND COMPLETE TO THE BEST OF MY KNOWLEDGE AND BELIEF.

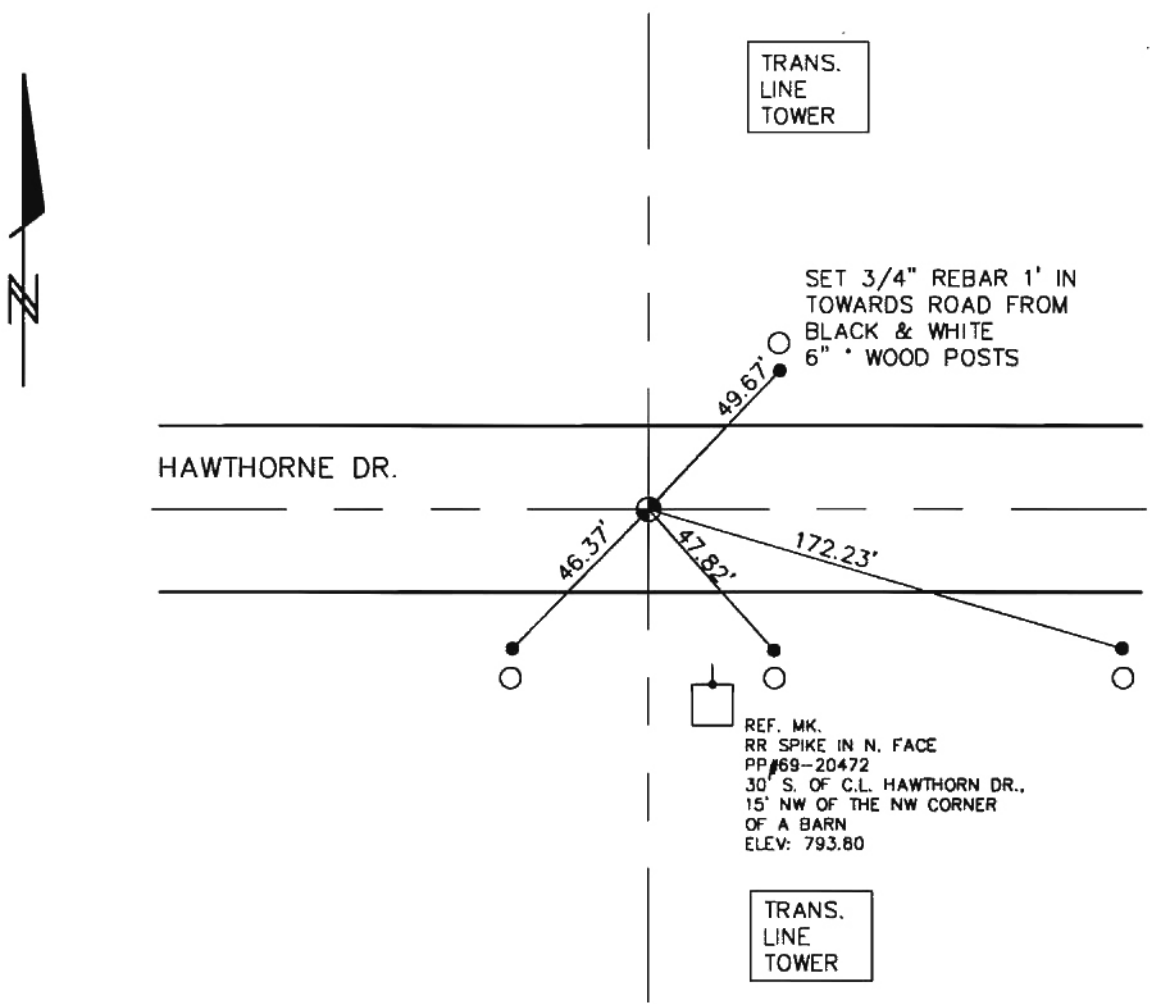


SIGNATURE Mark H. Banton S-1691 DATE: Jan 1999
OZAUKEE COUNTY SURVEYOR

007

**OZAUKEE COUNTY
U.S. PUBLIC LAND SURVEY MONUMENT RECORD**

PLAN VIEW OF CORNER WITH TIES TO A MINIMUM OF 4 WITNESS MONUMENTS



MAINTENANCE RECORD

DATE	INITIAL	REMARKS
10/10/97	B.E.S.	

MONUMENT LEGEND

- ⊕ = BERNTSEN ALUMINUM MONUMENT
- = CONCRETE WITH BRASS CAP
- ⊕ = CONCRETE WITH CROSS
- △ = 5/8" REBAR WITH ALUMINUM CAP