

"U.S. PUBLIC LAND SURVEY MONUMENT RECORD"
OZAUKEE COUNTY, WISCONSIN

TYPE OF MONUMENT: Concrete monument w/brass cap

STATE PLANE COORDINATES: N: 475958.59

E: 2547287.32

ELEVATION: 676.97 M.S.L. DATUM: 1929

FIELD BOOK: _____ PAGE: _____

FIELDWORK BY: Tom Genske & kapur and Associates

RECORD DRAWN BY: MARK BANTON

CONTROL ACCURACY:

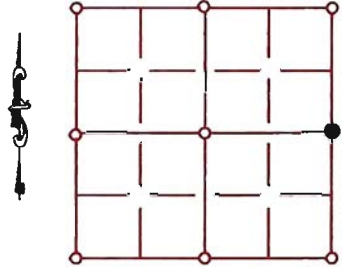
HORIZONTAL: 3RD ORDER, CLASS 1 VERTICAL: 3RD ORDER

CORNER INDEX No. 268

SECTION 36

TOWNSHIP 10

RANGE 21



LOCATION

BASIS OF MONUMENT LOCATION

SEAL:

1969 - Wallace Nienow (Land surveyor) found an 8"x8"x36" limestone monument 4" above ground and replaced with a concrete monument with brass cap.

2008 - Mark Banton (County Surveyor) redrawn to show co-ordinates from Kapur & Assoc re-monumentation work contracted through Ozaukee county

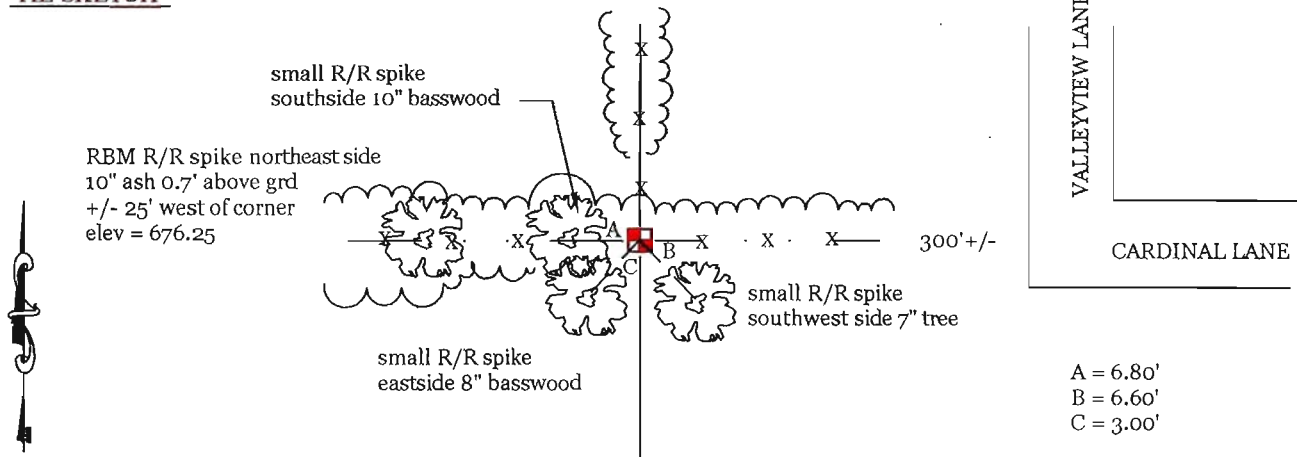


DATA SHOWN HEREON
IS CERTIFIED AS CORRECT:

Mark Banton
Ozaukee County Surveyor

DATE: 1/14/08

TIE SKETCH



A = 6.80'
B = 6.60'
C = 3.00'

MAINTENANCE RECORD

MONUMENT LEGEND

- = BERNTSEN MONUMENT (SEE TYPE OF MON. ABOVE)
- = CONCRETE MONUMENT w/ BRASS CAP
- = CONCRETE MONUMENT w/ CROSS
- = 5/8" REBAR WITH ALUMINUM CAP

DATE	BY WHOM	REMARKS
14 Jan 2008	M. Banton	re-draw and re-number corner