

CIZAKEL COUNTY W. Way
 RECORD OF U.S. PUBLIC LAND SURVEY CORNER

2414 14 CORNER
 SECTION 15
 T. 12 N., R. 22 E.
 TOWN OF BELGIUM
 LOT NO. _____

STATE PLANE COORDINATES

NORTH _____
 EAST _____

THETA ANGLE _____

ELEVATION OF CORNER _____

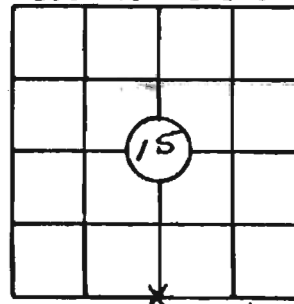
TYPE OF MONUMENT RECOVERED NONE

TYPE OF MONUMENT SET P.K. NAIL

LATE MONUMENT SET _____

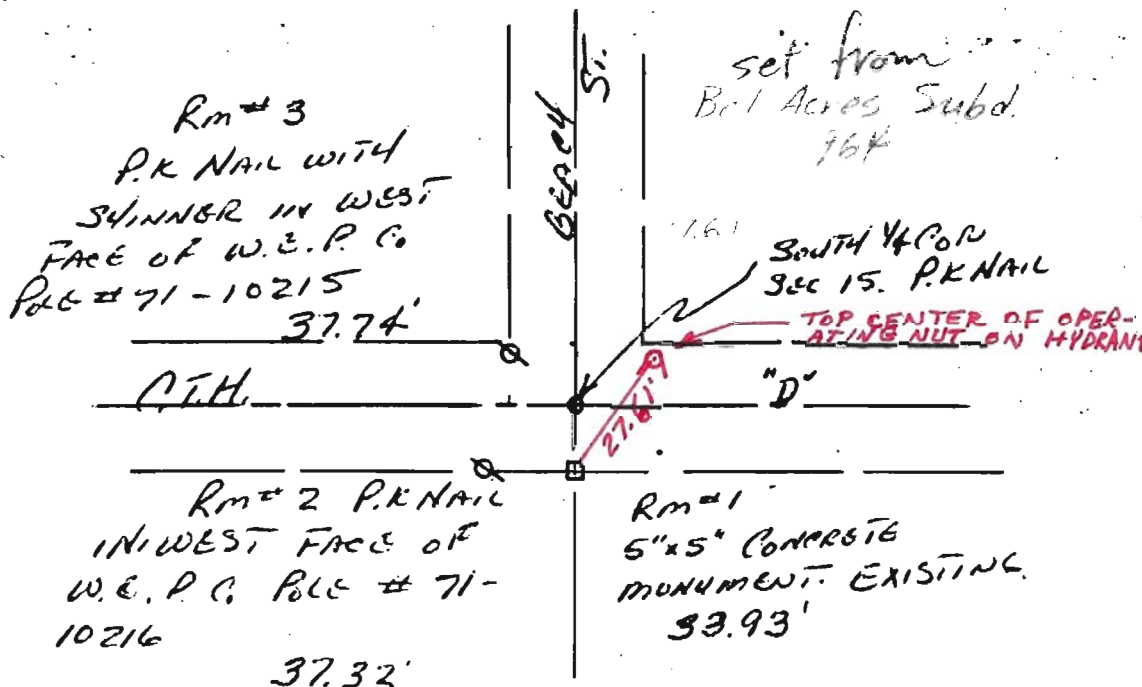
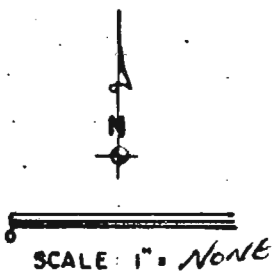
*TOM GENSKY
 284-4426*

LOCATION SKETCH



TIE SKETCH

SHOW AT LEAST FOUR TIES



RECOVERY PROCEDURE

WITNESSED BY:

JAMES G. MAYER
DAVID M. SCHMANN

RESET FROM BEL-ACRES SUBDIVISION AND PLAT OF SURVEY OF T1/2 TOWN OF BELGIUM. TRAVERSED SEC 15 TO VERIFY LOCATION.

TOM: TIES SHOWN ARE STILL GOOD, BUT I ADDED ONE AS SHOWN. Ken Way 9-13-83

EXCAVATION PERFORMED BY NONE (CONCRETE PAVEMENT, UNDERGROUND UTILITIES)

FIELD NOTES FILED AT DEPARTMENT OF PUBLIC WORKS INC MENASHA, WI BOOK 1456 PG. 18

DATE OF SURVEY 12/22/81 REG. LAND SURVEYOR James G. Mayer S-1273